

www.everestusacorp.com



Improving your comfort
WITH SMART SOLUTIONS

ALUMINUM
and **UPVC**
SYSTEMS



FACTS

- A LEADER COMPANY IN BALKAN
- FOUNDED IN 1997
- WORKING IN CONSTRUCTION INDUSTRY
- EXPORTS IN USA, GERMANY, FRANCE, ITALY, SWITZERLAND, AUSTRIA, CROATIA, MONTENEGRO, KOSOVO, SERBIA, FYROM, MALTA & GREECE.
- USES THE LATEST TECHNOLOGY IN ALUMINUM SYSTEMS AND INDUSTRIAL PRODUCTION

ACTIVITY

Taking into account our sales in the market and our client's consideration for offered aluminum systems, the experience and market recognition, in 2005 we decided to build the factory of production of aluminum profiles by launching in the market our systems. Everest is founded in 1997 as a construction company. Our initial occupation has been in construction industry, residential buildings, streets, channel systems, pipelines. At the beginning of 2000 we were the first to import aluminum profiles and we started to trade aluminum systems and accessories shortly becoming leader in the Albanian market. In our company we believe that cooperation is the key to establish a secure relationship with the client. We are optimistic that every opportunity will be beneficial to all the parties involved in collaboration.



CONSTRUCTION

ALUMINUM

UPVC (VINYL)

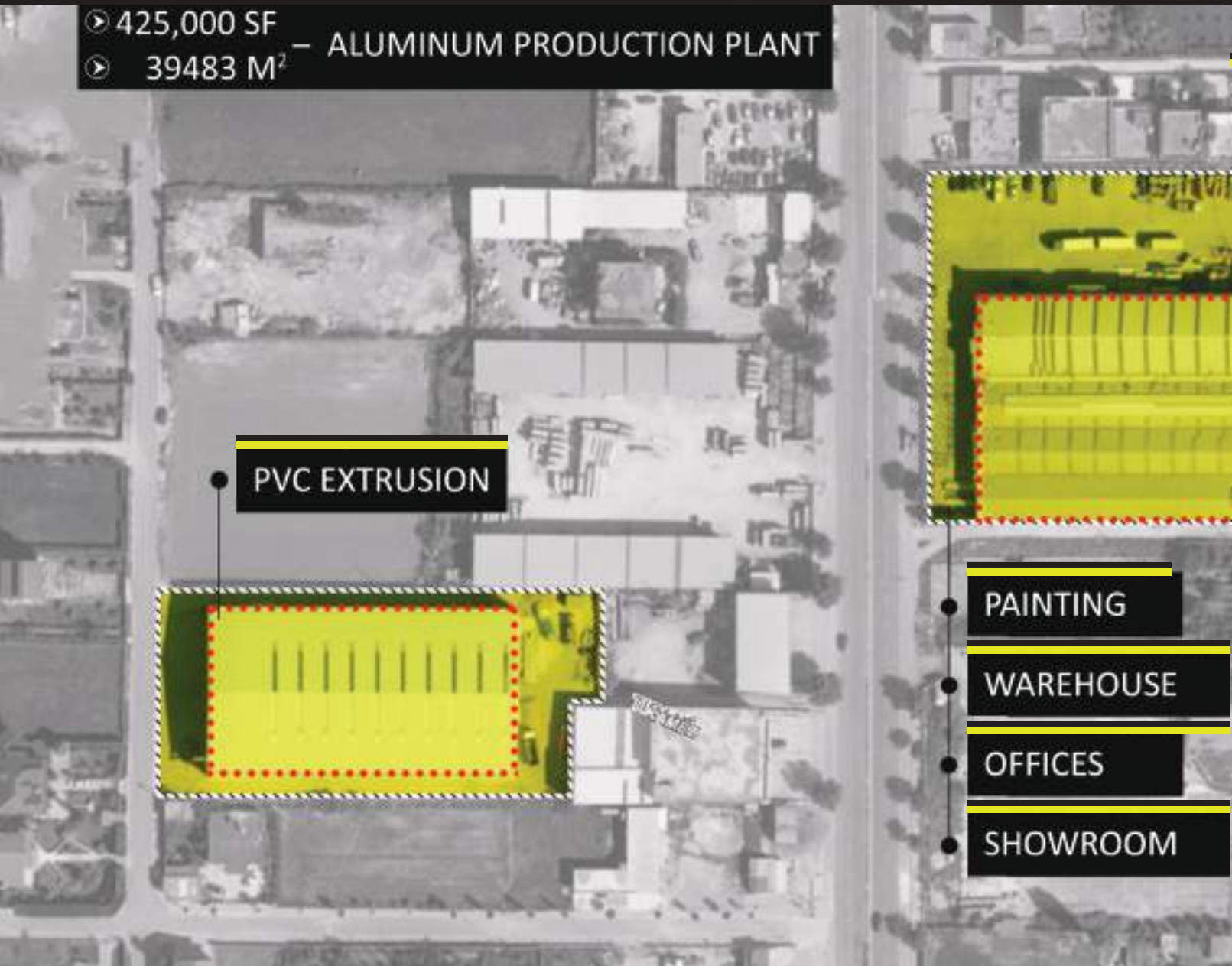
CHASSIS

POTENTIAL

- **50 EMPLOYEES** – TECHNICAL OFFICE
- **450 EMPLOYEES** – ALUMINUM PRODUCTION



- **425,000 SF** – ALUMINUM PRODUCTION PLANT
- **39483 M²**





CHASSIS PRODUCTION

BILLET PRODUCTION

MACHINING

ALUMINUM EXTRUSION

HISTORY 1997-2018

➤ **1997**

FOUNDATION

Everest starts its activity, mainly associated with construction.

➤ **2000**

ALUMINUM MARKET

Everest enters aluminum market, with products such as windows & curtain wall.

➤ **2005**

MANUFACTURER

Everest Factory is built, providing extruded & painted aluminum profiles.

➤ **2010**

DISTRIBUTORS

The market expands in Balkans & Europe being present, with more than 30 subsidiaries.

➤ **2016**

CHASSIS PRODUCTION

Everest Chassis Department is created.

➤ **2017**

DISTRIBUTORS

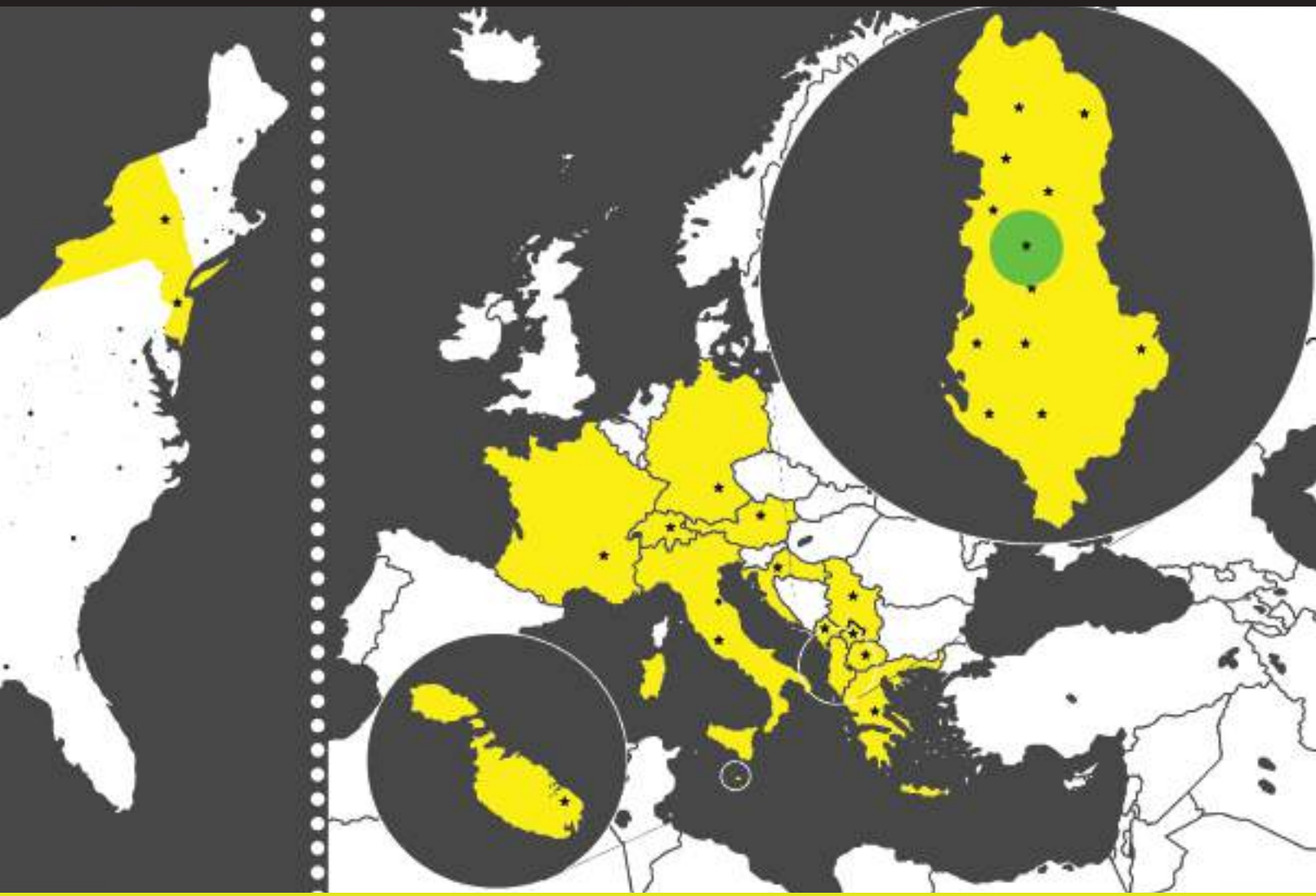
The market expands in USA being present in New York and New Jersey.

➤ **2018**

uPVC PRODUCTION

Everest enters uPVC market, with products such as windows & doors.

EVEREST LOCATIONS



- TIRANE, ALBANIA (HEADQUARTERS)
- PRISTINA, KOSOVO
- PODGORICA, MONTENEGRO
- SKOPJE, FYROM
- VALETTE, MALTA
- ROME, ITALY
- MUNICH, GERMANY
- ZURICH, SWITZERLAND
- VIENNA, AUSTRIA
- RIJEKA, CROATIA
- BORDEAUX, FRANCE
- BEOGRAD, SERBIA
- ATHENS, GREECE
- NEW YORK, USA





EVEREST CONSTRUCTION GROUP

IMPROVING YOUR COMFORT WITH SMART SOLUTIONS

Everest company was established in 1997, a small venture, but bold in the construction field. Everest over the years managed to grow into a strong and competitive business. Initially as one of the biggest builders in residential buildings initially on housing and public works, and then as one of the largest importers of aluminum profiles. In 2005, having already an extensive network of associates we decided to start production of aluminum profiles in Albania. Within the year, Everest grew every day more and more being already a key player in the aluminum industry in the country and beyond. Today, thanks to the latest production technology, Everest employs hundreds of workers, exports to over 10 countries in Europe and produces and sells aluminum profiles for the entire local market.

Everest is one of the leading firms in manufacturing aluminum profiles in the region with more than 10 years of experience and with a fast growing production capacity, thanks to the energy and passion for the work, the Trustees and a qualified staff, who make this company a reliable and safe partner for you.

EVEREST comes to you with a wide range of architectural systems like glass facades, doors, windows, shutters, brise soleil, railing etc. But in addition, offers endless opportunities in producing different profiles for other industrial needs.

One of the main features that makes Everest company a very successful enterprise, is also consulting with its customers considering any request or suggestion, to later implement them in very good solution to the requirements of the market. Therefore, the key to success of Everest is derivative of this close cooperation.

Another aspect that makes Everest a leader in the region, is embracing innovation and the latest technology, to bring near you systems that ensure good quality, comfort and harmony with the environment.

Everest offers modern systems for doors and windows with optimal thermal transmittance values, fulfilling market demands for energy savings.

Everest is characterized by flexibility and dexterity when it comes to production lead time, shipping and installation.



**33 000 UNITIZED SEMI
STRUCTURAL FACADE**



**33 000 UNITIZED
STRUCTURAL FACADE**



30 000 STANDARD



30 000 STRUCTURAL



**37 000 WINDOW
WALL OUTSWING**



**37 000 WINDOW
WALL INSWING**



70 000



71 000



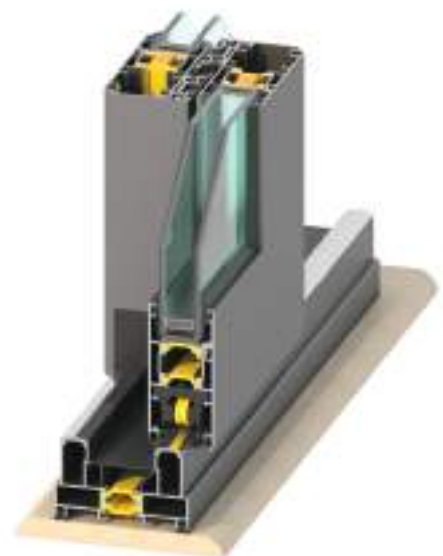
74 000



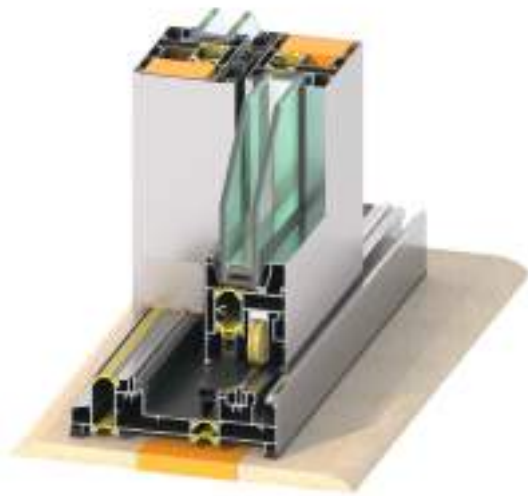
75 000



76 000



91 000



92 000



93 000



95 000



60 000



62 000



63 000



85 000



8000 SERIES SHUTTER SYSTEM



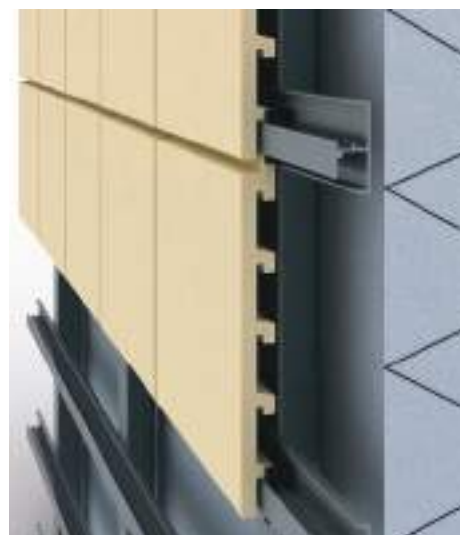
INSECT SCREEN SOLUTION



MAIN DOOR



**ALUMINIUM COMPOSITE
MATERIAL CLADDING**



**CERAMIC TILE CLADDING
VENTILATED FACADE**



GLASS RAILING



18 000 GUILLOTINE SYSTEM



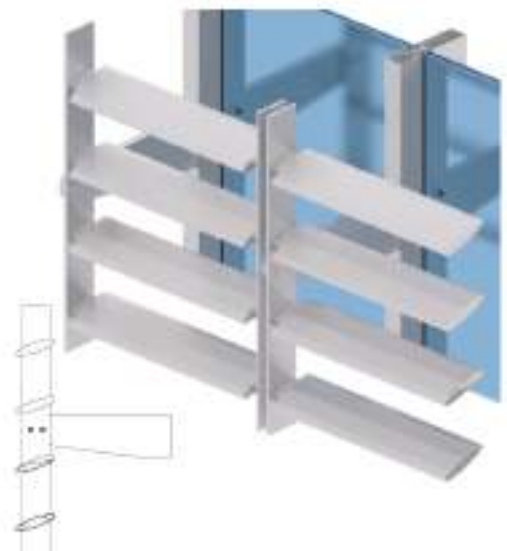
PERGOLA



ALUMINIUM CLADDING



SOLAR PANEL



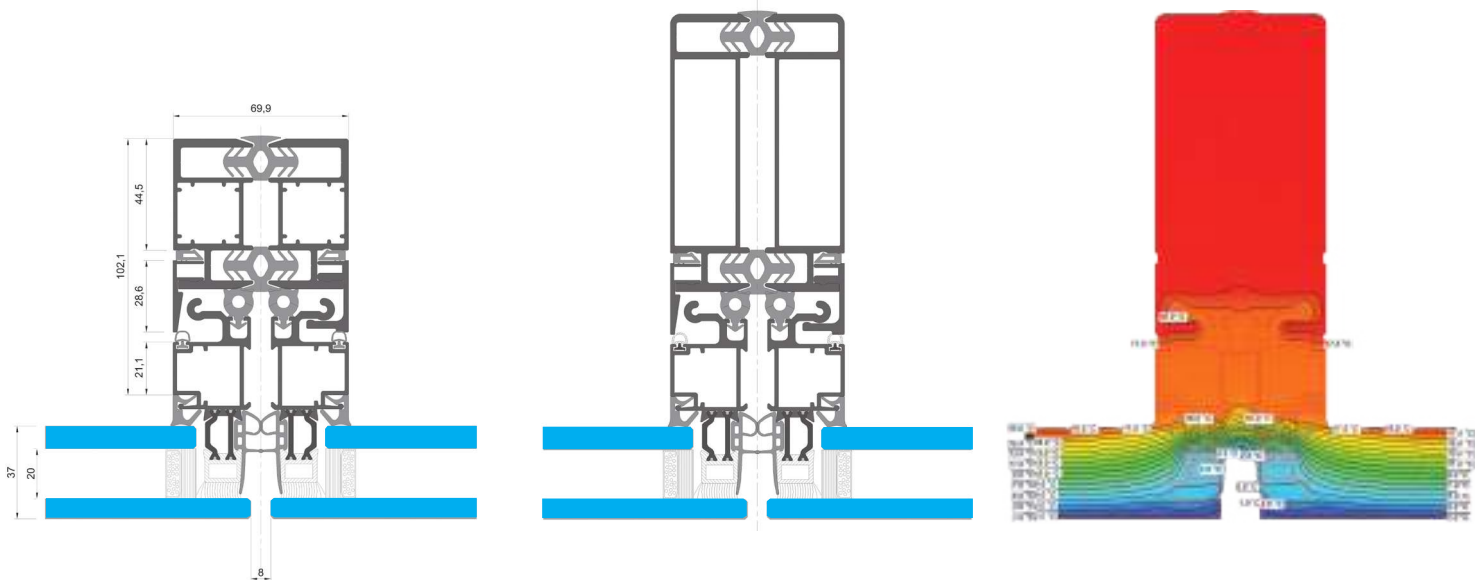
BRISE SOLEIL



Combines the high-quality appearance of an all-glass façade with the efficient construction of a high performance unitised façade. Unitised Customised Construction is a flexible and powerful modular system for unitised façades. The main difference between this system and special constructions is the system components approved by renowned test institutes. All other components can be tailored perfectly to the façade, around these components, on an individual project basis.



33 000 UNITIZED STRUCTURAL FAÇADE



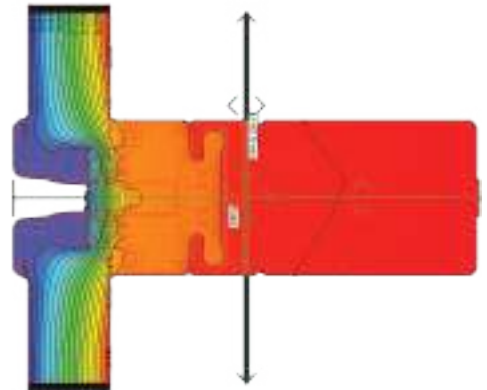
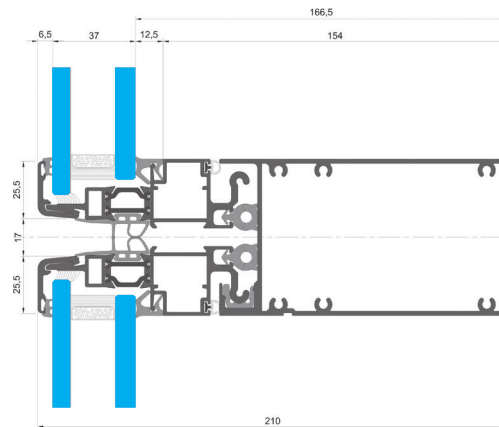
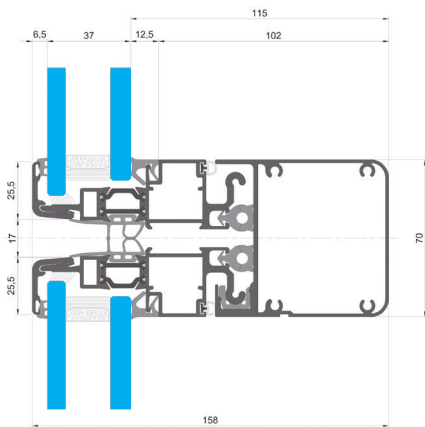
Exterior visible width:	70mm [2 3/4"]
Mullion Depth:	75-220 mm [3"-8.7"]
Transom Depth:	75-220 mm [3"-8.7"]
Glass Thickness:	≤50 mm [≤2"]
Mullion max inertia	jx=501
Transom max inertia:	jx=386
Uf :	1.3 W/m ² K [0.229 BTU/h ft ² °F]



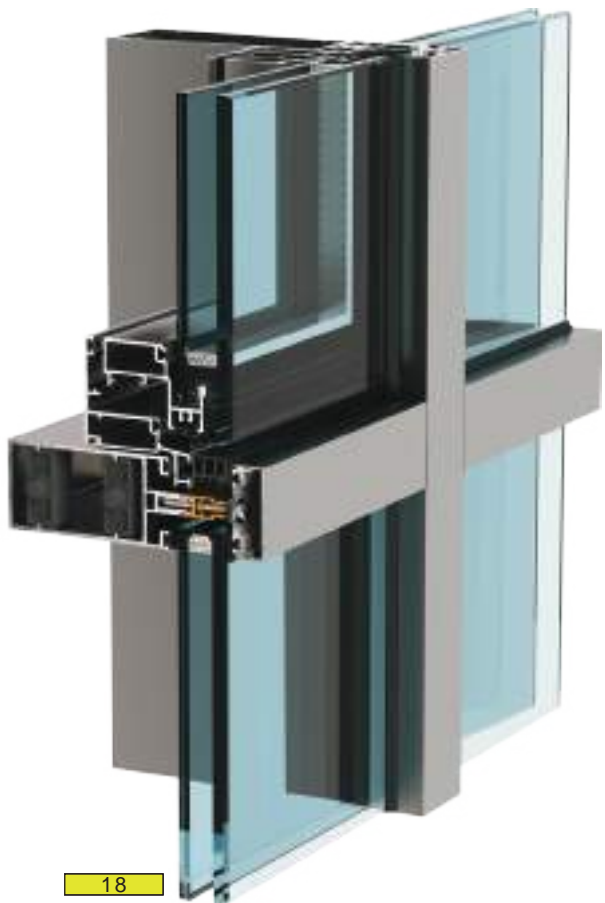
Combines the high-quality appearance of an all-glass façade with the efficient construction of a high performance unitised façade. Unitised Customised Construction is a flexible and powerful modular system for unitised façades. All other components can be tailored perfectly to the façade, around these components, on an individual project basis.



33 000 UNITIZED SEMI-STRUCTURAL FAÇADE



Exterior visible width:	70mm [2 3/4"]
Mullion Depth:	100-220 mm [4"-8.7"]
Transom Depth:	100-220 mm [4"-8.7"]
Glass Thickness:	≤50 mm [≤2"]
Mullion max inertia	$j_x=501$
Transom max inertia:	$j_x=386$
Uf :	1.7 W/m ² K [0.299 BTU/h ft ² °F]



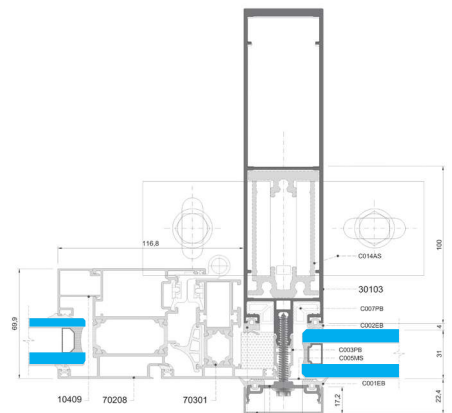
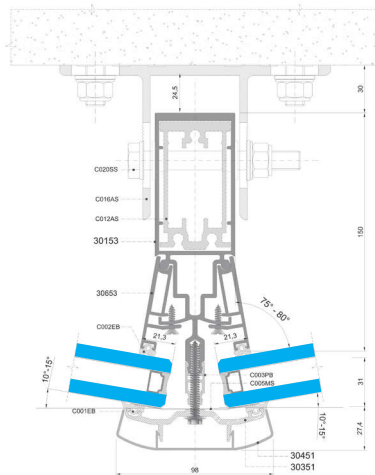
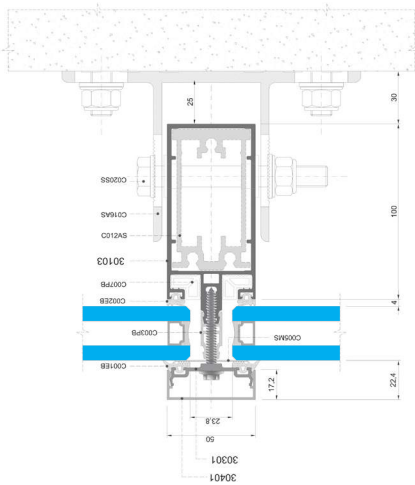
“Everest CE 30 000” is a complete system for Curtainwalls offering multiple design choices and high quality for clean looking, well built façades. With a high thermal and sound efficiency this system is the main choice for multi-storey buildings from architects all over the world.

The tried and tested thermally insulated mullion / transom façade systems Everest Comfort 30000 can be used to create impressive vertical façades and skylights – particularly with large module widths and installation heights, and faceted inwards or outwards.

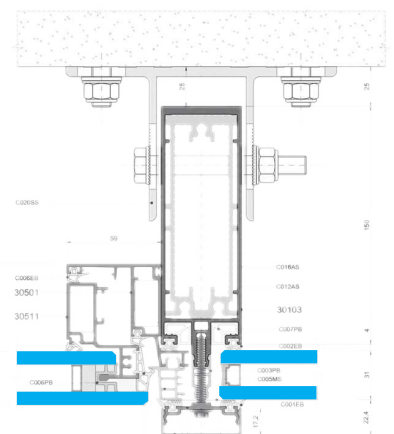
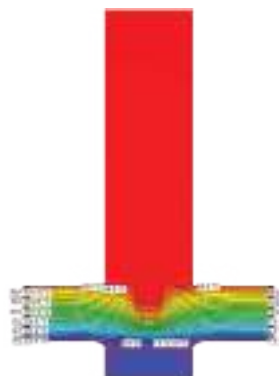
The super Insulation system option not only fulfils current energy-saving standards, but with U_f values of up to $0.8 \text{ W/m}^2\text{K}$ [$0.153 \text{ BTU/h ft}^2\text{°F}$], already exceeds some of these requirements today. In this way, aluminium curtain walling suitable for passive housing is now an option.



30 000 STANDARD CURTAIN WALL SERIES



Exterior visible width:	50mm [2"]
Mullion Depth:	75-220 mm [3"-87"]
Transom Depth:	75-220 mm [3"-8.7"]
Glass Thickness:	≤50 mm [≤2"]
Mullion max inertia	$j_x=800$
Transom max inertia:	$j_x=800$
Uf :	0.87 W/m ² K [0.153 BTU/h ft ² °F]





“Everest CE 30 000” is a complete system for Curtainwalls offering multiple design choices and high quality for clean looking, well built façades. With a high thermal and sound efficiency this system is the main choice for multi-storey buildings from architects all over the world.

The tried and tested thermally insulated mullion / transom façade systems Everest Comfort 30000 can be used to create impressive vertical façades and skylights – particularly with large module widths and installation heights, and faceted inwards or outwards.

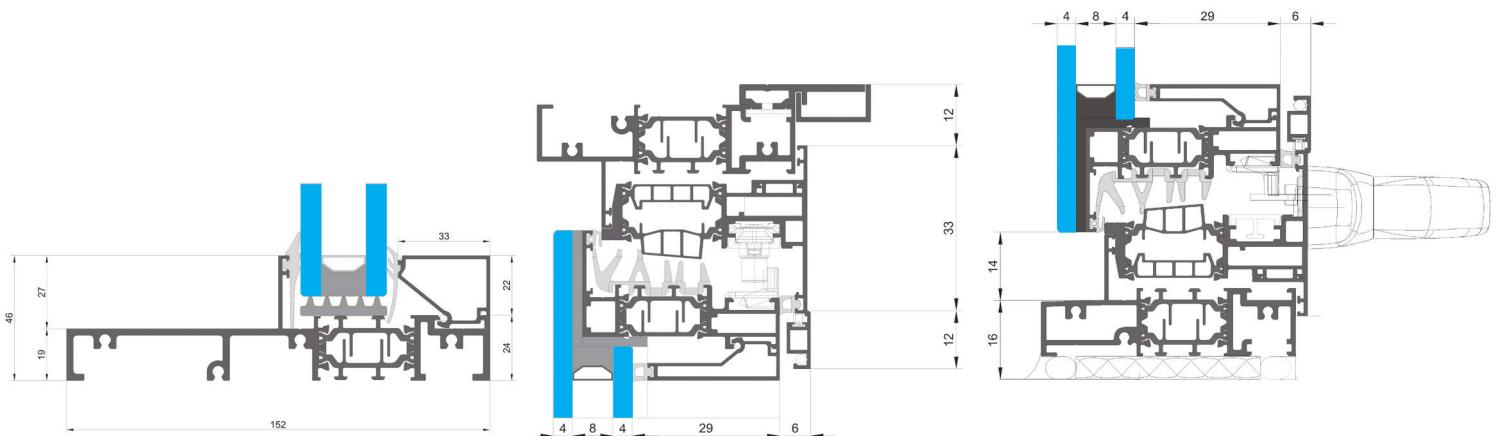
The super Insulation system option not only fulfils current energy-saving standards, but with Uf values of up to $1.3 \text{ W/m}^2\text{K}$ [$0.229 \text{ BTU/h ft}^2\text{°F}$], already exceeds some of these requirements today. In this way, aluminium curtain walling suitable for passive housing is now an option.



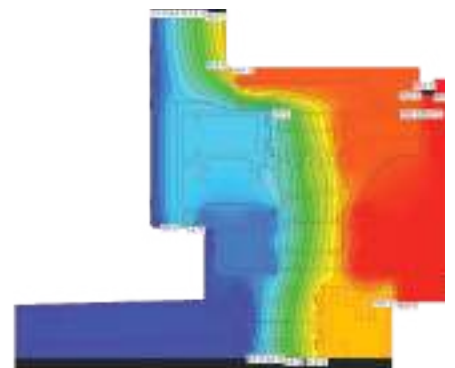
Window wall systems are commonly used in ribbon window configurations or punched openings. The framing system spans from slab-to-slab and can be installed from the building's interior to improve logistics and reduce installation costs. Window wall systems can also employ floor slab edge covers that enable the system to mimic the look of a curtain wall system at a significantly reduced cost. Everest offers a complete suite of tools and engineering services to assist in proper system selection, specification, and installation of this system. The series presented in this page is outswing operated system.



37 000 WINDOW WALL OUTSWING SERIES



Exterior visible width:	46 mm [1.8"]
Mullion Depth:	152 mm [6"]
Transom Depth:	152 [6"]
Glass Thickness:	≤50 mm [≤2"]
Mullion max inertia	jx=700
Transom max inertia:	jx=700
Uf :	1.7 W/m²K [0.299 BTU/h ft²°F]

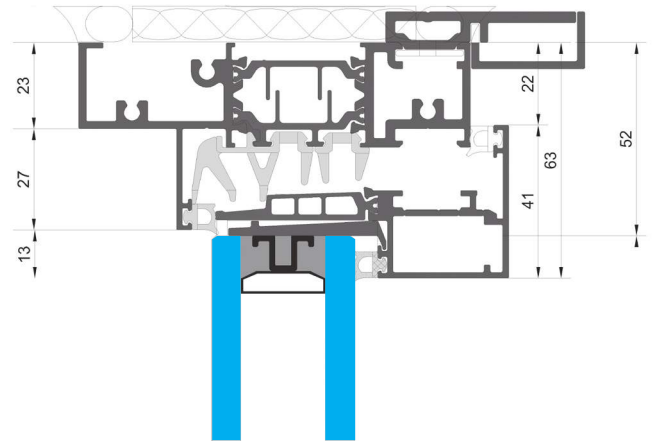
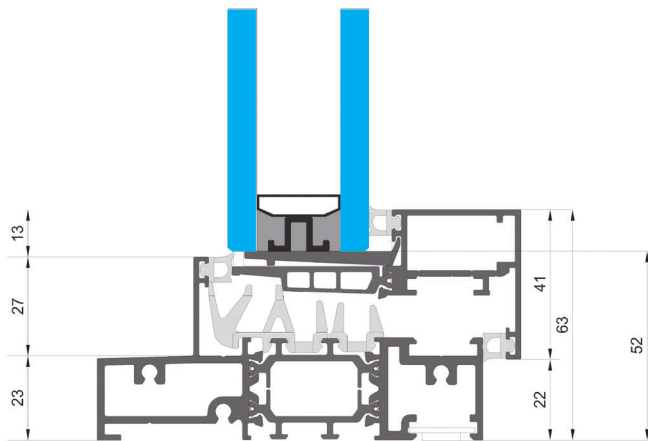




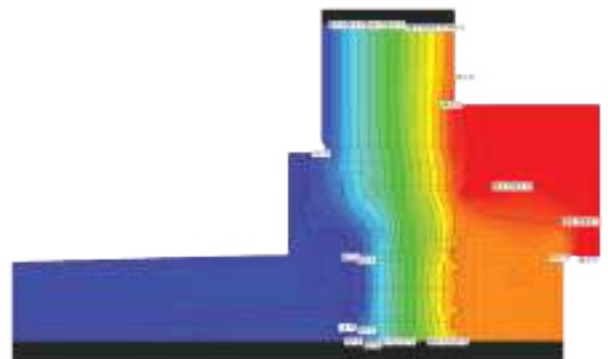
Window wall systems are commonly used in ribbon window configurations or punched openings. The framing system spans from slab-to-slab and can be installed from the building's interior to improve logistics and reduce installation costs. Window wall systems can also employ floor slab edge covers that enable the system to mimic the look of a curtain wall system at a significantly reduced cost. Everest offers a complete suite of tools and engineering services to assist in proper system selection, specification, and installation of this system. The series presented in this page is inswing operated system.



37 000 WINDOW WALL INSWING SERIES

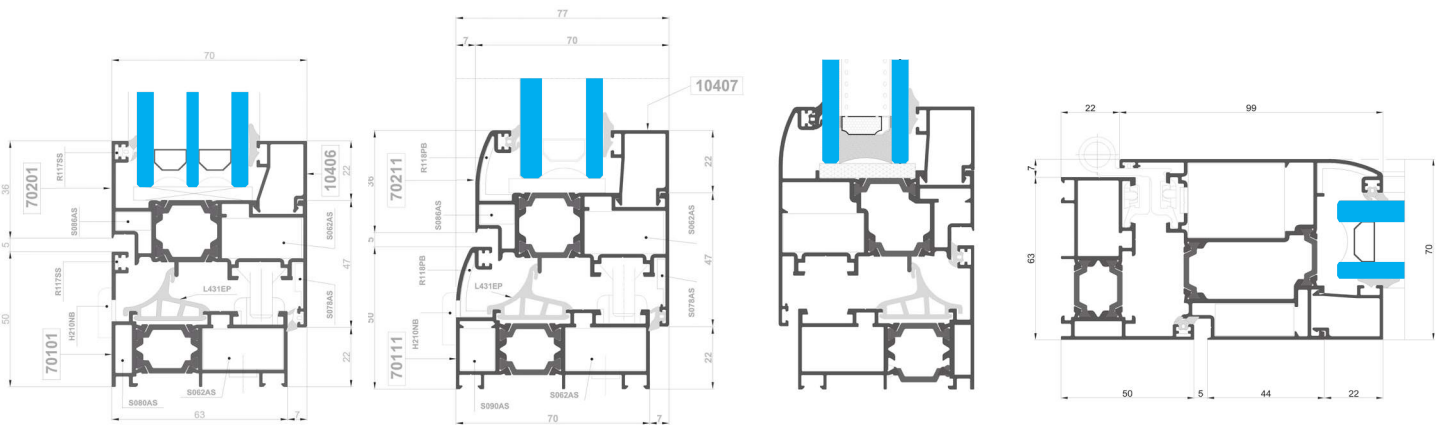


Exterior visible width:	46 mm [1.8"]
Mullion Depth:	152 mm [6"]
Transom Depth:	152 [6"]
Glass Thickness:	≤50 mm [≤2"]
Mullion max inertia:	$j_x=700$
Transom max inertia:	$j_x=700$
Uf :	1.6 W/m ² K [0.281 BTU/h ft ² °F]

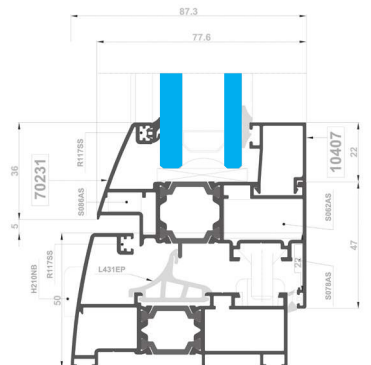
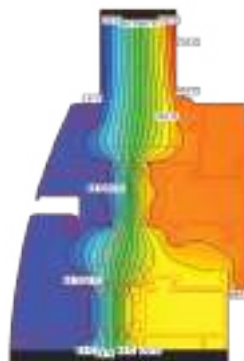




Superior by design, 70 000 series tilt and turn window systems are engineered to perform better than other types of windows. And when you add high-quality components, expertise in manufacturing and a robust quality assurance process, the result is an advanced window system with remarkable performance and durability. Everest tilt and turn windows achieve exceptional energy efficiency, air tightness, water resistance and sound control. Innovative and easy to operate European windows also provide excellent natural ventilation, high levels of security and are conveniently easy to clean. We offer a variety of dimensions and styles for this standart series.



Exterior visible width:	81mm [3.2"]
Frame Depth:	80 mm [3.15"]
Sash Depth:	78 mm [3.1"]
Glass Thickness:	≤49 mm [≤1.9"]
Thermal Insulation:	Polyamide 22 mm [0.9"]
Sash mechanism weight limit	≤130 kg [≤286.6 lbs]
Uf :	1.9 W/m ² K [0.334 BTU/h ft ² °F]

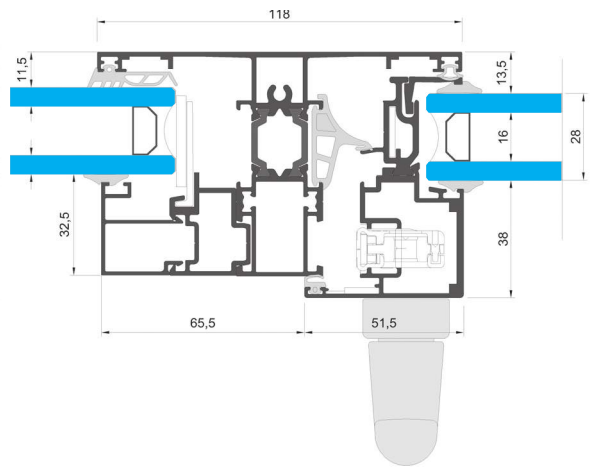
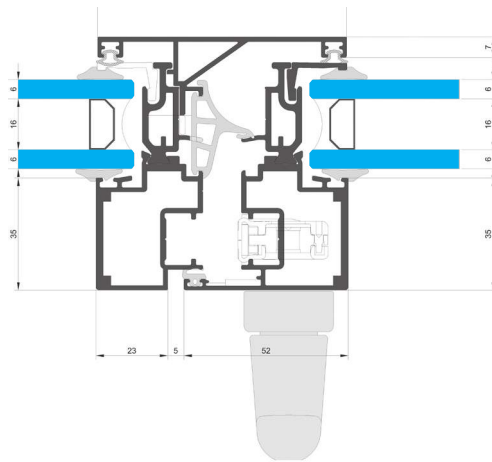
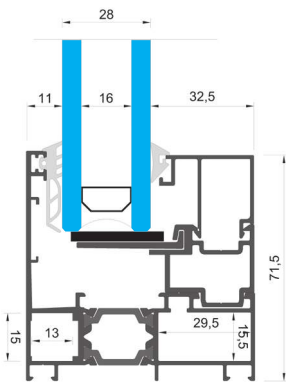




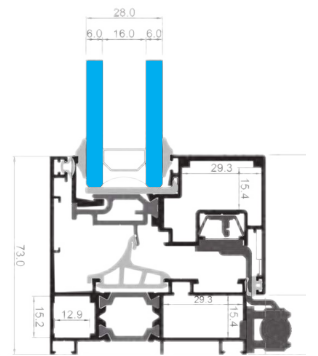
CE 70000 Hidden Sash is a Tilt & Turn system for highly insulated doors and windows which can fit either a European Groove or a Euronut mechanism. Hinged hidden sash window system with frame depth of 73mm [2.9"]. Exterior sightline, only 73 mm(2.9"). Maximum glazing surface. Extraordinary increase in luminosity. Possibility of incorporating hardware with concealed hinges.



70 000 HIDDEN SASH SERIES



Exterior visible width:	73mm [2.9"]
Frame Depth:	73 mm [2.9"]
Sash Depth:	71 mm [≤2.8"]
Glass Thickness:	≤28 mm [≤1.1"]
Thermal Insulation:	Polyamide 22 mm [0.9"]
Sash mechanism weight limit	≤130 kg [≤286.6 lbs]
Uf :	1.7 W/m²K [0.299 BTU/h ft²°F]

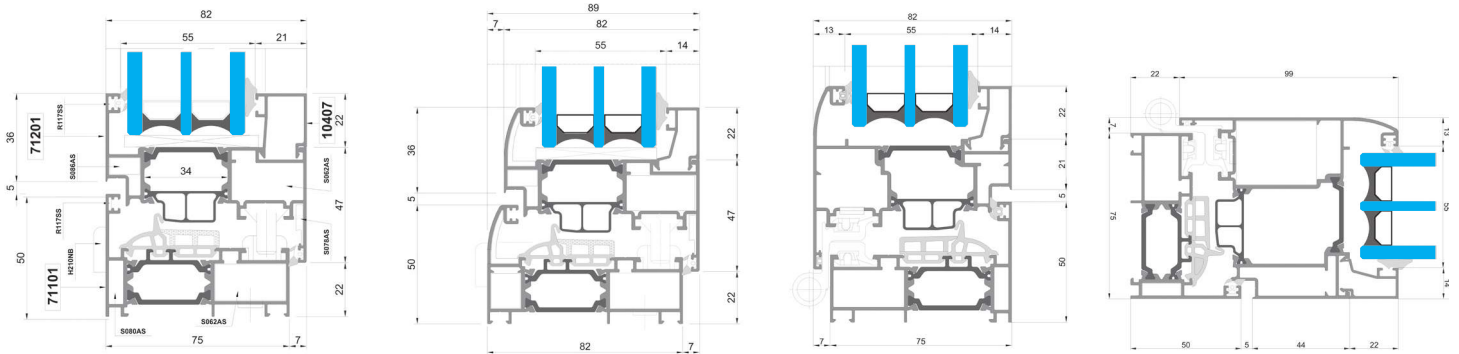




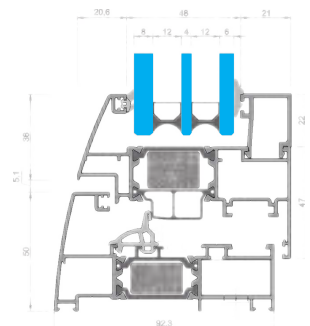
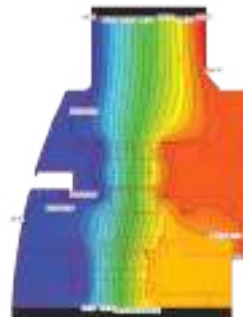
Window tilt and turn system with a basic depth of 90 mm [3 5/8"] combine the benefits of aluminum with maximum thermal insulation for design-orientated, sustainable architecture. In the basic depth of 81mm [3.2"] , we offer a comprehensive modular window system, including new passive house certification. Which features maximum thermal insulation and represents a perfect combination of structural requirements with the greatest possible degree of architectural design freedom.



71 000 SERIES



Exterior visible width:	81mm [3.2"]
Frame Depth:	92 mm [3 5/8"]
Sash Depth:	90 mm [3.5"]
Glass Thickness:	≤61 mm [≤2.4"]
Thermal Insulation:	Polyamide 34 mm [1.3"]
Sash mechanism weight limit	≤130 kg [≤286.6 lbs]
Uf :	1.15 W/m ² K [0.202 BTU/h ft ² °F]

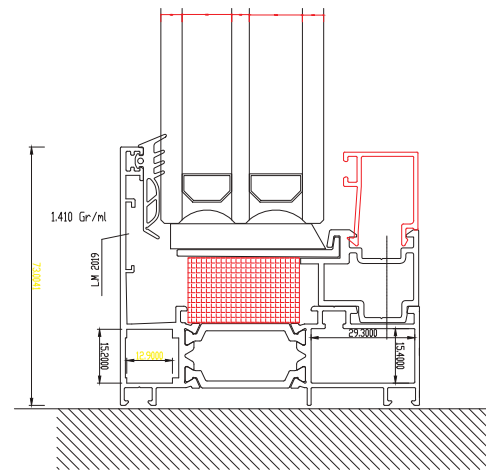
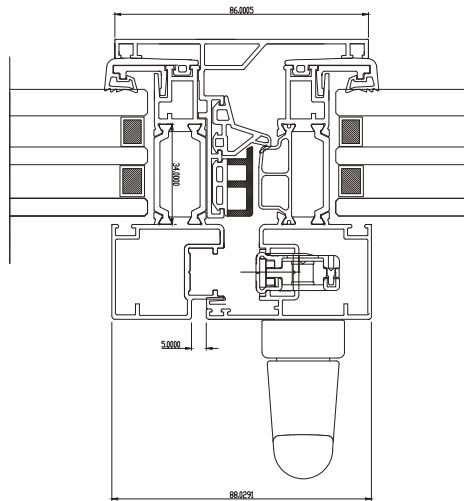
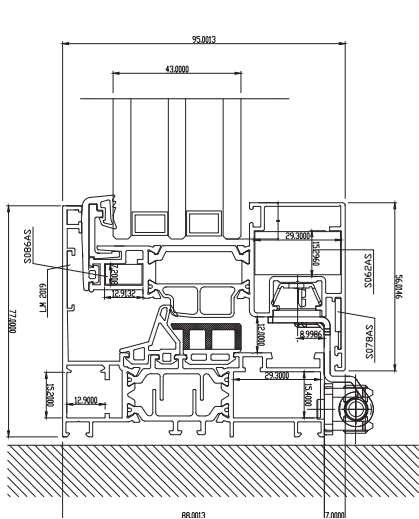




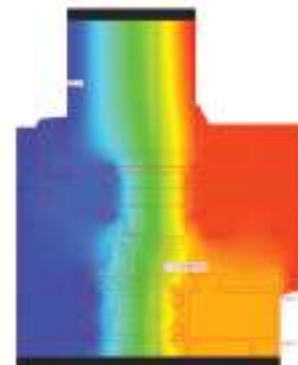
Hidden Sash Window tilt and turn system with a basic depth of 95 mm [3.74"] combine the benefits of aluminum with maximum thermal insulation for design-orientated, sustainable architecture. We offer a comprehensive modular window system, including new passive house certification, which features maximum thermal insulation and represents a perfect combination of structural requirements with the greatest possible degree of architectural design freedom.



71 000 HIDDEN SASH SERIES



Exterior visible width:	77mm [3.03"]
Frame Depth:	95 mm [3.74"]
Sash Depth:	95 mm [3.74"]
Glass Thickness:	≤61 mm [≤2.4"]
Thermal Insulation:	Polyamide 34 mm [1.3"]
Sash mechanism weight limit	≤130 kg [≤286.6 lbs]
Uf :	1.06 W/m ² K [0.186 BTU/h ft ² °F]

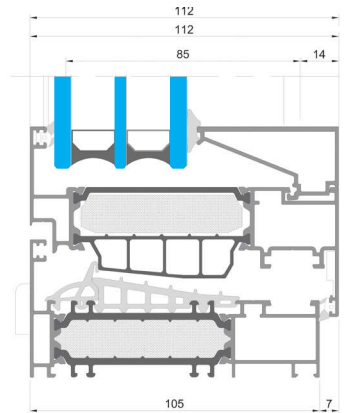
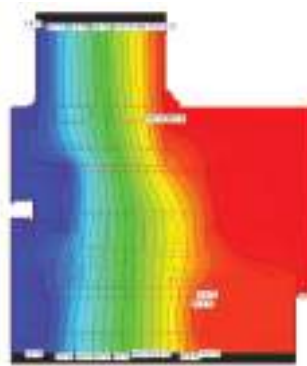
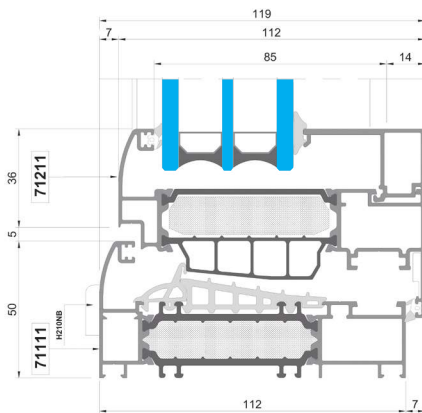




Window tilt and turn system with a basic depth of 112 mm [4 11/16"] combine the benefits of aluminum with maximum thermal insulation for design-orientated, sustainable architecture. We offer a comprehensive modular window system, including new passive house certification, which features maximum thermal insulation and represents a perfect combination of structural requirements with the greatest possible degree of architectural design freedom.



74 000 SERIES



Exterior visible width:	91mm [3.58"]
Frame Depth:	112 mm [4 11/16"]
Sash Depth:	112 mm [4 11/16"]
Glass Thickness:	≤61 mm [≤2.4"]
Thermal Insulation:	Polyamide 64 mm [2.5"]
Sash mechanism weight limit	≤130 kg [≤286.6 lbs]
Uf :	0.8 W/m²K [0.140 BTU/h ft²°F]

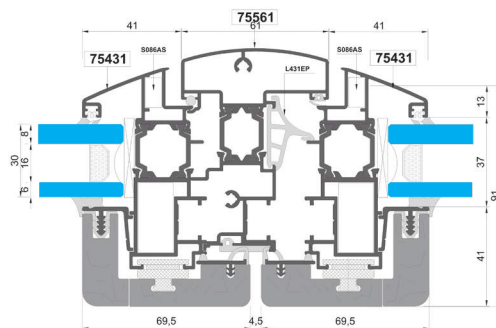
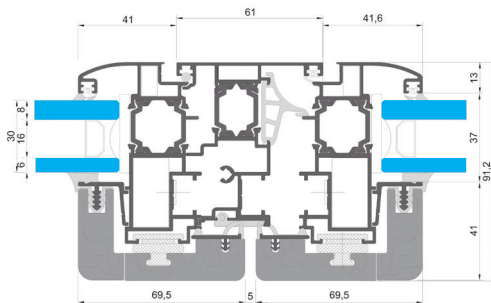
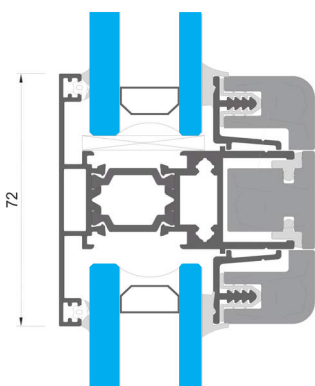


The 75000 series is an insulated hinged system for doors and windows which combines the advantages of aluminium & wood by offering the durability of aluminium along with the warm feeling of wood. The advantages are:

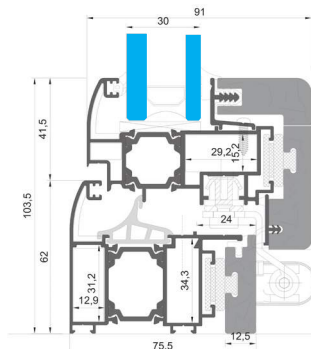
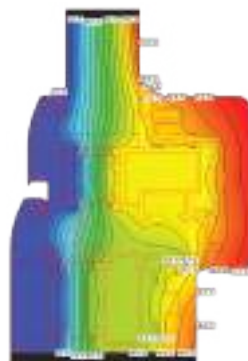
- Excellent aesthetics with a warm, wooden look in the interior.
- Considerable energy savings thanks to the system's high energy efficiency.
- High level of sound insulation
- Ease of use and high functionality
- High quality with certified performance.
- Increased static loads and functionality in case of severe weather conditions.



75 000 SERIES



Exterior visible width:	75mm [2.9"]
Frame Depth:	75 mm [2.9"]
Sash Depth:	91 mm [3.6"]
Glass Thickness:	≤48 mm [≤1.88"]
Thermal Insulation:	Polyamide 22 mm [0.9"]
Sash mechanism weight limit	≤130 kg [≤286.6 lbs]
Uf :	1.22 W/m ² K [0.214 BTU/h ft ² F]





The 76000 series is based on the 75000 series, providing better thermal insulation and increased comfort. The advantages of this series are:

Excellent aesthetics with a warm, wooden look in the interior.

Considerable energy savings thanks to the system's high energy efficiency.

High level of sound insulation.

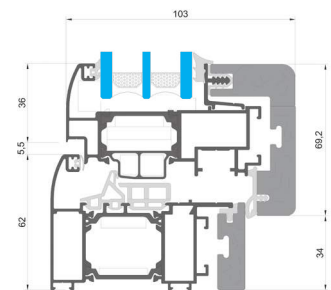
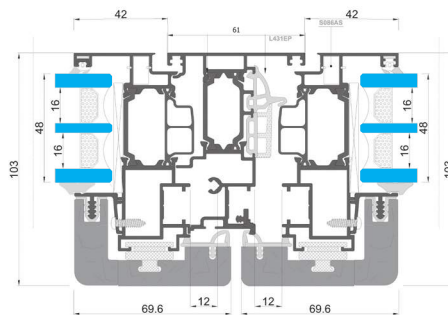
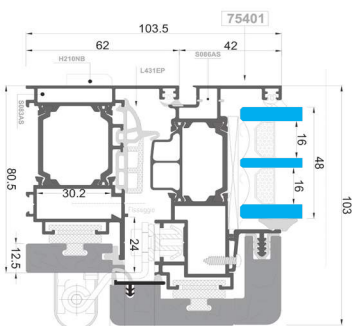
Ease of use and high functionality.

High quality with certified performance.

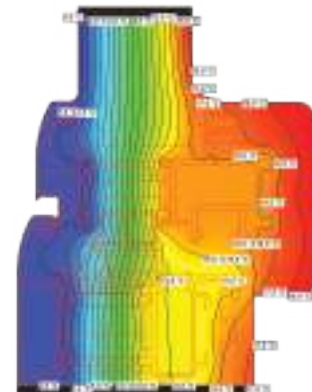
Increased static loads and functionality in case of severe weather conditions.



76 000 SERIES



Exterior visible width:	103.5mm [4.07"]
Frame Depth:	80.5 mm [3.16"]
Sash Depth:	103 mm [4.0"]
Glass Thickness:	48 mm [≤1.8"]
Thermal Insulation:	Polyamide 34 mm mm[1.3"]
Sash mechanism weight limit	≤130 kg [≤286.6 lbs]
Uf :	0.89 W/m²K [0.156 BTU/h ft²°F]

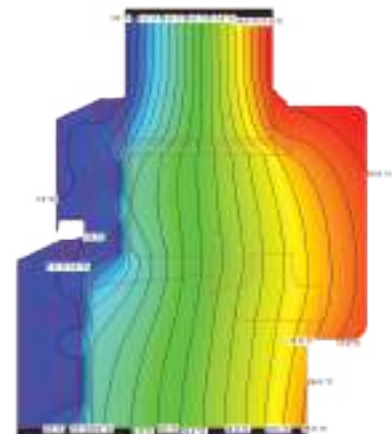
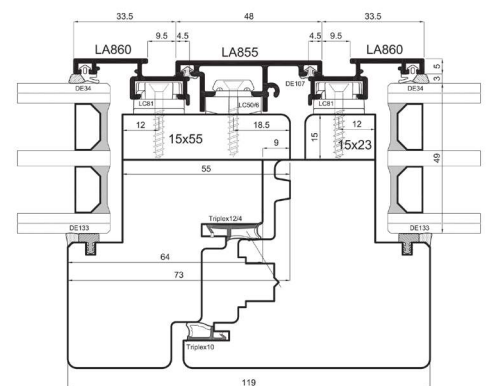
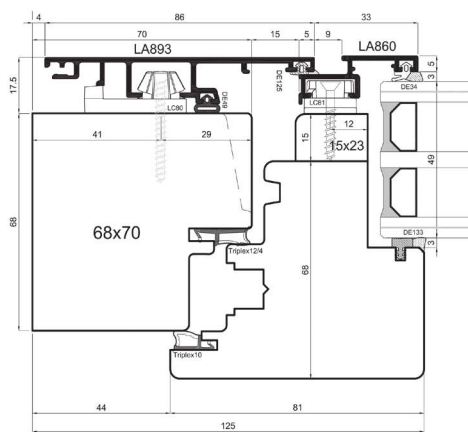
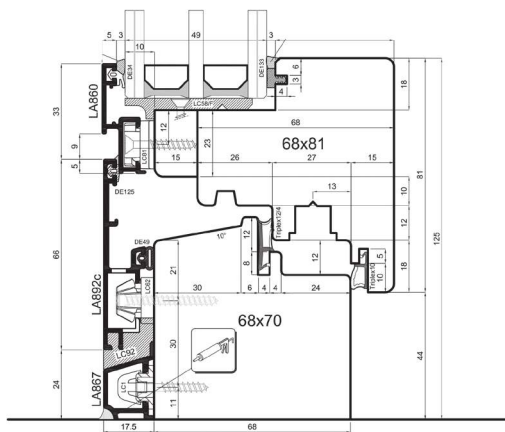




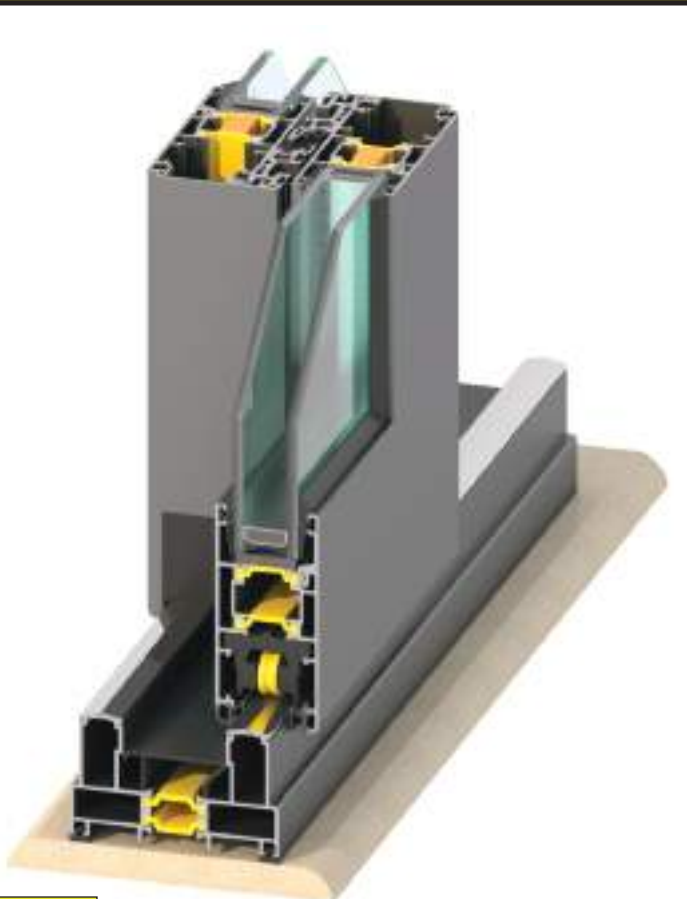
Everest 79 000 Series system features an innovative frame that no longer needs the central gasket, though ensuring perfect water tightness while reducing production costs. The silhouette is squared and oriented to contemporary design. We have emphasized the concept of coplanarity to extend the use of wood-aluminium doors and windows in residential as well as in executive contexts where preference is towards flat geometries and coplanarity with the building facade. The flush surface of the profiles allows perfect welding of all elements.



79 000 SERIES



Exterior visible width:	125mm [4.9"]
Frame Depth:	65 mm [2.55"]
Sash Depth:	85 mm [3.34"]
Glass Thickness:	≤31 mm [≤1.2"]
Thermal Insulation:	Wood
Sash mechanism weight limit	≤130 kg [≤286.6 lbs]
Uf :	0.89 W/m ² K [0.156 BTU/h ft ² °F]



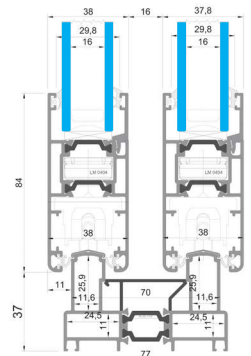
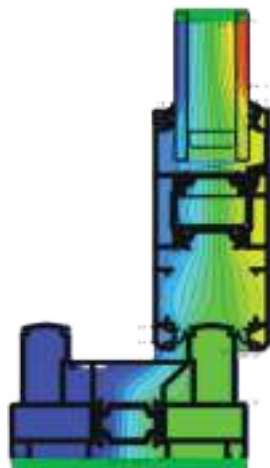
91 000 sliding window series open with the sash sliding left or right. Some people find a sliding glass window easier to open and close than a crank-style window. Since they slide open without protruding, horizontal sliders are an excellent choice for rooms facing walkways, porches or patios. Horizontal slider windows are a favorite for contemporary style homes and are also popular for satisfying bedroom egress requirements. In a single slider, one sash slides to open. In a double slider, both sashes open, which can be great for providing air circulation to a room.

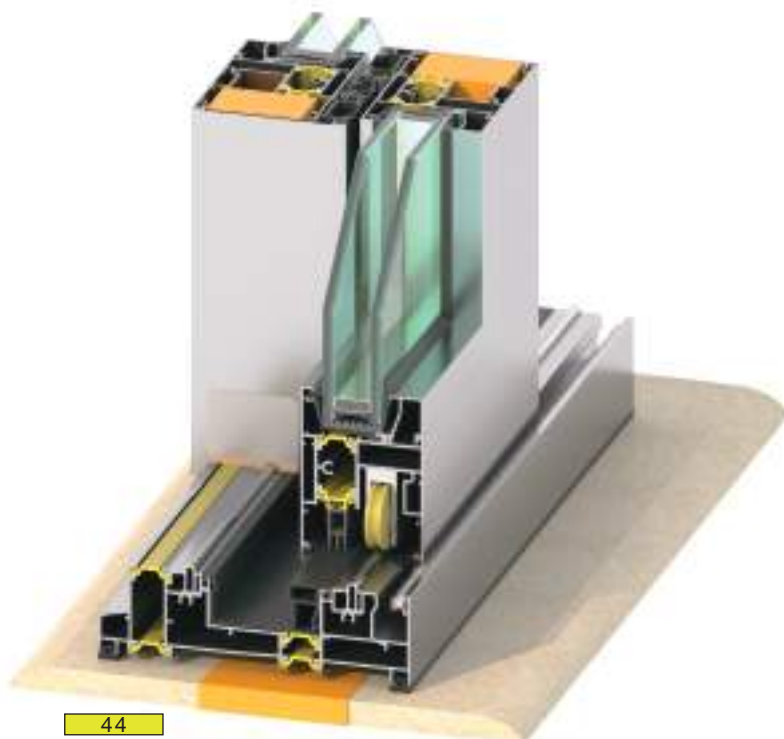


91 000 SERIES



Exterior visible width:	121mm [4.7"]
Frame Depth:	77 mm [3"]
Sash Depth:	38 mm [1.5"]
Glass Thickness:	≤24 mm [≤0.9"]
Thermal Insulation:	Polyamide 22 mm [0.9"]
Sash mechanism weight limit	≤180 kg [400.9 lbs]
Uf :	2.97 W/m ² K [0.523 BTU/h ft ² °F]





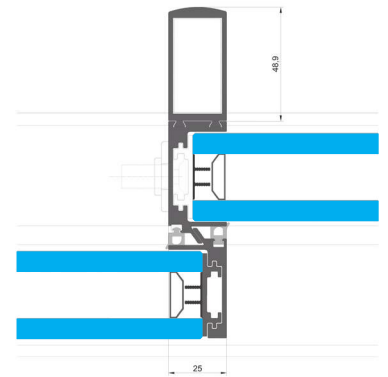
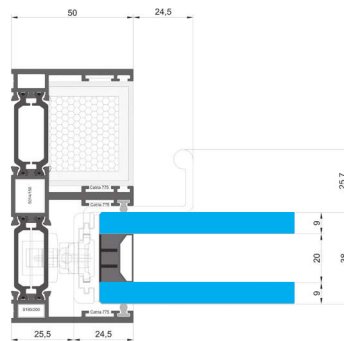
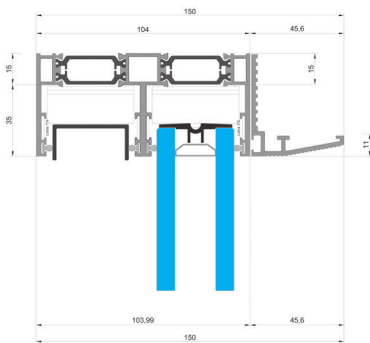
Highly thermally insulated sliding and lift-and-slide system with perfect watertightness, outstanding sound reduction. Based on single, double and triple-track outer frames, Everest creates large opening widths with outstanding user comfort. Perfect for use as a high-quality system solution in commercial projects and luxury residential properties. The 92000 series ensures that the sliding leaf can be operated easily and securely.



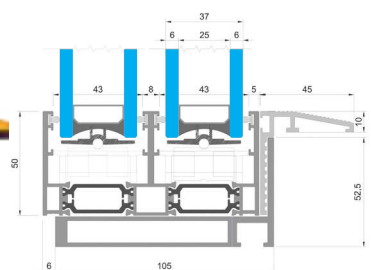
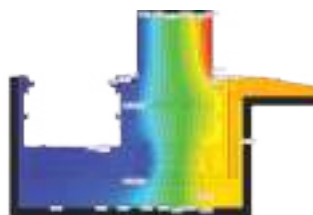
The minimal framed large panel sliding glass wall by Everest 93 000 series is simple in form yet engineered to perfection. Producing clean, uniform, and ultra-thin lines for maximum light filled spaces that connect the interior to the exterior. 93 000 minimal slide series offers full floor to ceiling sliding glass panels with recessed top and bottom tracks. Produced through time-tested premium engineering, this system allows for maximum transparency with the largest panes of glass and the most minimal frames offered by Everest.



93 000 MINIMAL SLIDE SERIES



Exterior visible width:	10 mm [0.4"]
Frame Depth:	111 mm [4.4"]
Sash Depth:	37 mm [1.45"]
Glass Thickness:	≤37mm [≤1.45"]
Thermal Insulation:	Polyamide 34 mm [1.33"]
Sash mechanism weight limit	500 kg [1102 lbs]
Uf :	1.39 W/m ² K [0.244 BTU/h ft ² °F]





The 95000 serie is an insulated sliding system for elegant windows and doors, combining the advantages of aluminum with the warmth of natural wood.

The advantages for this system are: Excellent aesthetics and combination with interiors surrounded by wood.

High energy savings due to the high energy efficiency of the system.

Increased level of security.

High level of sound insulation.

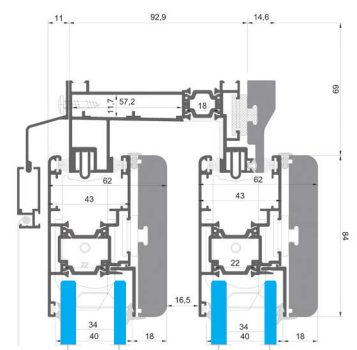
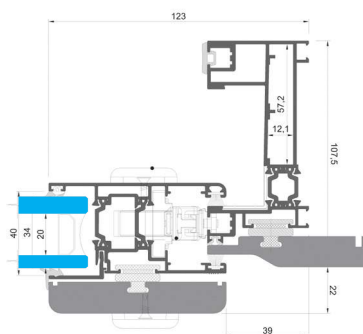
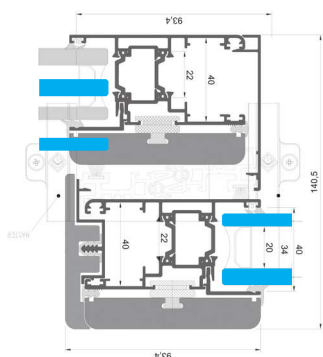
Ease of use and high functionality.

High quality with certified framing performance.

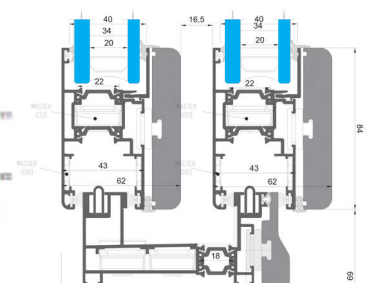
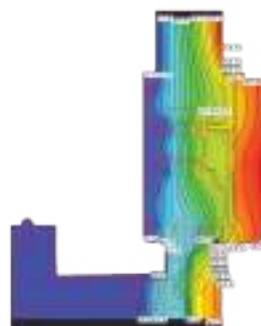
Increased static loads and functionality in case of severe weather conditions.



95 000 SERIES



Exterior visible width:	123mm [4.8"]
Frame Depth:	108 mm [4.3"]
Sash Depth:	62 mm [2.4"]
Glass Thickness:	≤ 34 mm [≤ 1.3"]
Thermal Insulation:	Polyamide 22 mm [0.9"]
Sash mechanism weight limit	≤ 180 kg [≤ 390.7 lbs]
Uf :	1.79 W/m ² K [0.315 BTU/h ft ² °F]

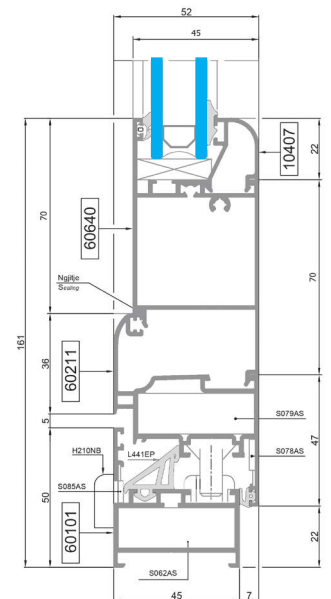
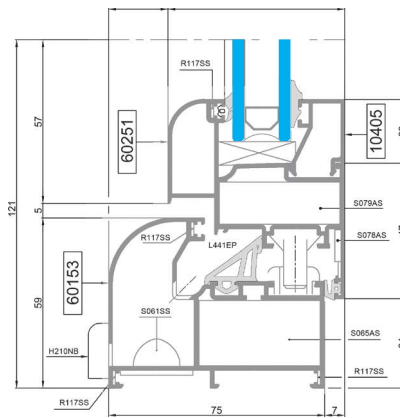
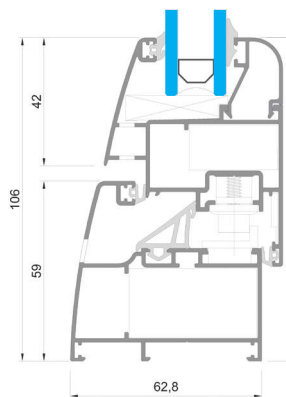
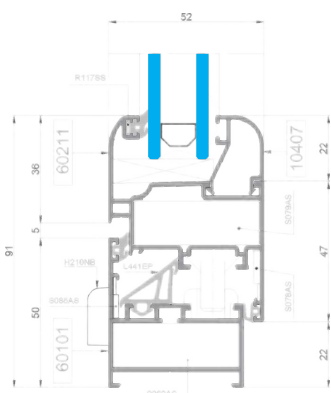




The 60000 series consists of one of the most completed non-insulated casement systems which can serve a wide range of different needs with satisfied performance. It provides variety of profile design. Suitable in inner space divisions and has a variety of solutions, good security level, good sound insulation and high functionality.



60 000 SERIES



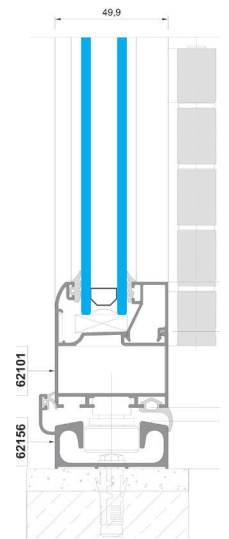
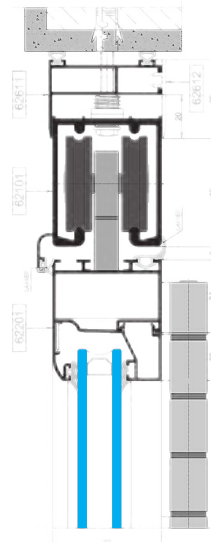
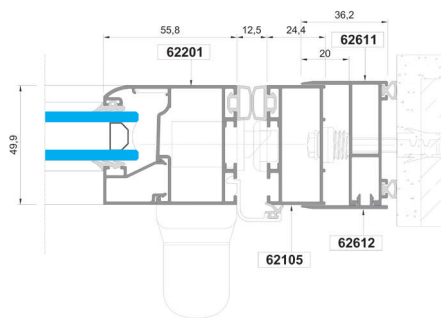
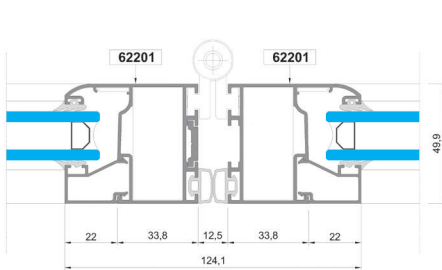
Exterior visible width:	106 mm [4.2"]
Frame Depth:	63 mm [2.5"]
Sash Depth:	59 mm [2.3"]
Glass Thickness:	≤34 mm [≤1.3"]
Sash mechanism weight limit	≤130 kg [≤286.6 lbs]



The 62 000 system provides for a highly competitive versatile folding door and window solution that allows leaves to fold either to the inside or to the outside in lots possible configurations and across four different threshold solutions. this system solution gives architects and builders much more diversity to connect building interiors with the external environment in numerous ways.



62 000 SERIES



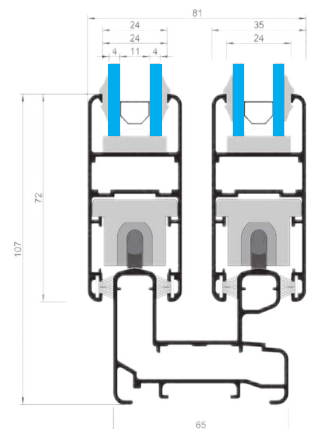
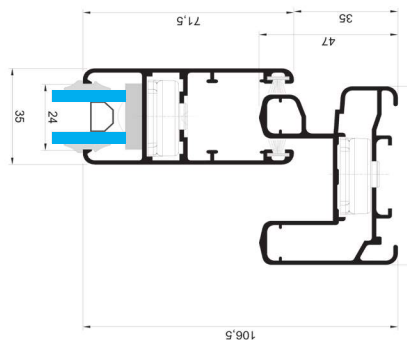
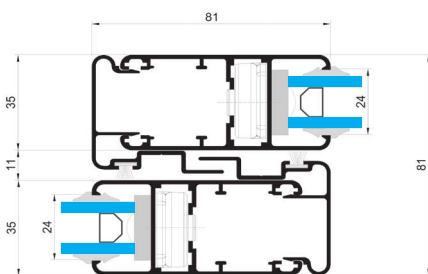
Exterior visible width:	124 mm [4.9"]
Frame Depth:	50 mm [2"]
Sash Depth:	50 mm [2"]
Glass Thickness:	≤30 mm [≤1.2"]
Sash mechanism weight limit	≤300 kg [≤580.7 lbs]



Our 63 000 non insulated sliding aluminium systems are single track sliding glass walls that offer transformative design flexibility. Unlimited spans of individual, this system has the main advantage of having a low weight and curved shape of profiles. With this abilities you can be free to get more out of your space and your creative opportunities.



63 000 SERIES



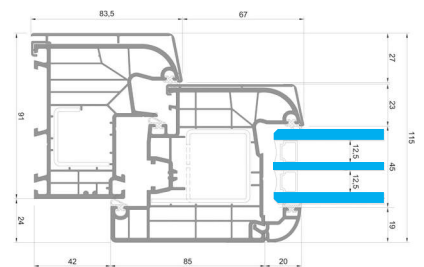
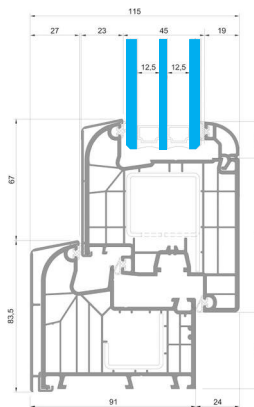
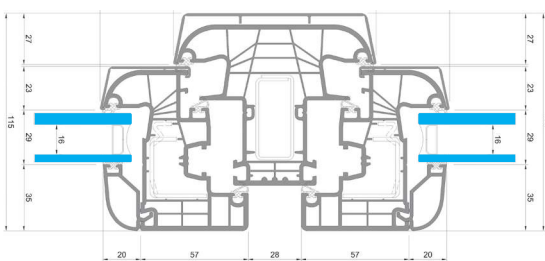
Exterior visible width:	106.5 mm [4.2"]
Frame Depth:	65 mm [2.6"]
Sash Depth:	35 mm [1.4"]
Glass Thickness:	≤24 mm [≤0.95"]
Sash mechanism weight limit	≤180 kg [≤400.9 lbs]



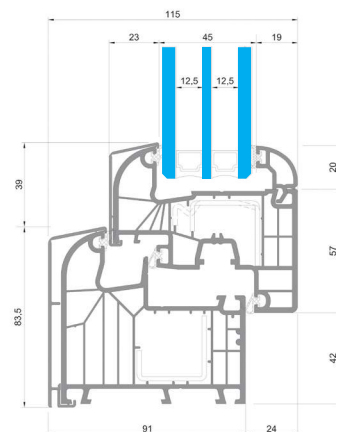
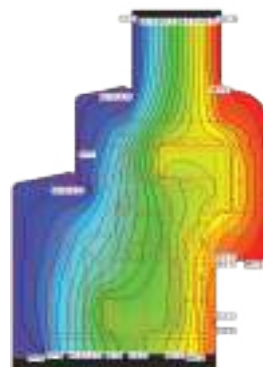
After being present in the market for over 10 years with aluminum systems, Everest decided to incorporate uPVC systems as one of the branches of manufacturing. Our uPVC systems have a great thermal performance, reaching U_f values as low as $0.85 \text{ W/m}^2\text{K}$ [$0.149 \text{ BTU/h ft}^2\text{°F}$].



85 000 UPVC SYSTEM



Exterior visible width:	122.5mm [4.8"]
Frame Depth:	91 mm [3 5/8"]
Sash Depth:	87 mm [3.42"]
Glass Thickness:	≤45 mm [≤1.77"]
Thermal Insulation:	Polyamide 34 mm [1.3"]
Sash mechanism weight limit	≤130 kg [≤286.6 lbs]
Uf :	0.85 W/m²K [0.149 BTU/h ft²°F]





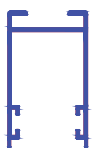
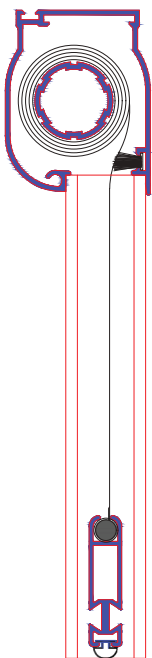
Our insect screen range features durable, weather-resistant products for harmonious integration into your existing structures. Insect screen frames can be matched to the style of your structure and to your conservatory, allowing full use of all windows and doors.

The insect screen fabric for doors and windows is highly transparent. The protective net is barely perceptible from inside or outside. The appearance of your windows and doors therefore remains practically unchanged by the use of our insect screen products.

Everest insect screen is the best solution for protection from wasps or other undesired insects. It can be a clamping frame, hinged frame, roller blind or sliding frame.



INSECT SCREEN SYSTEM

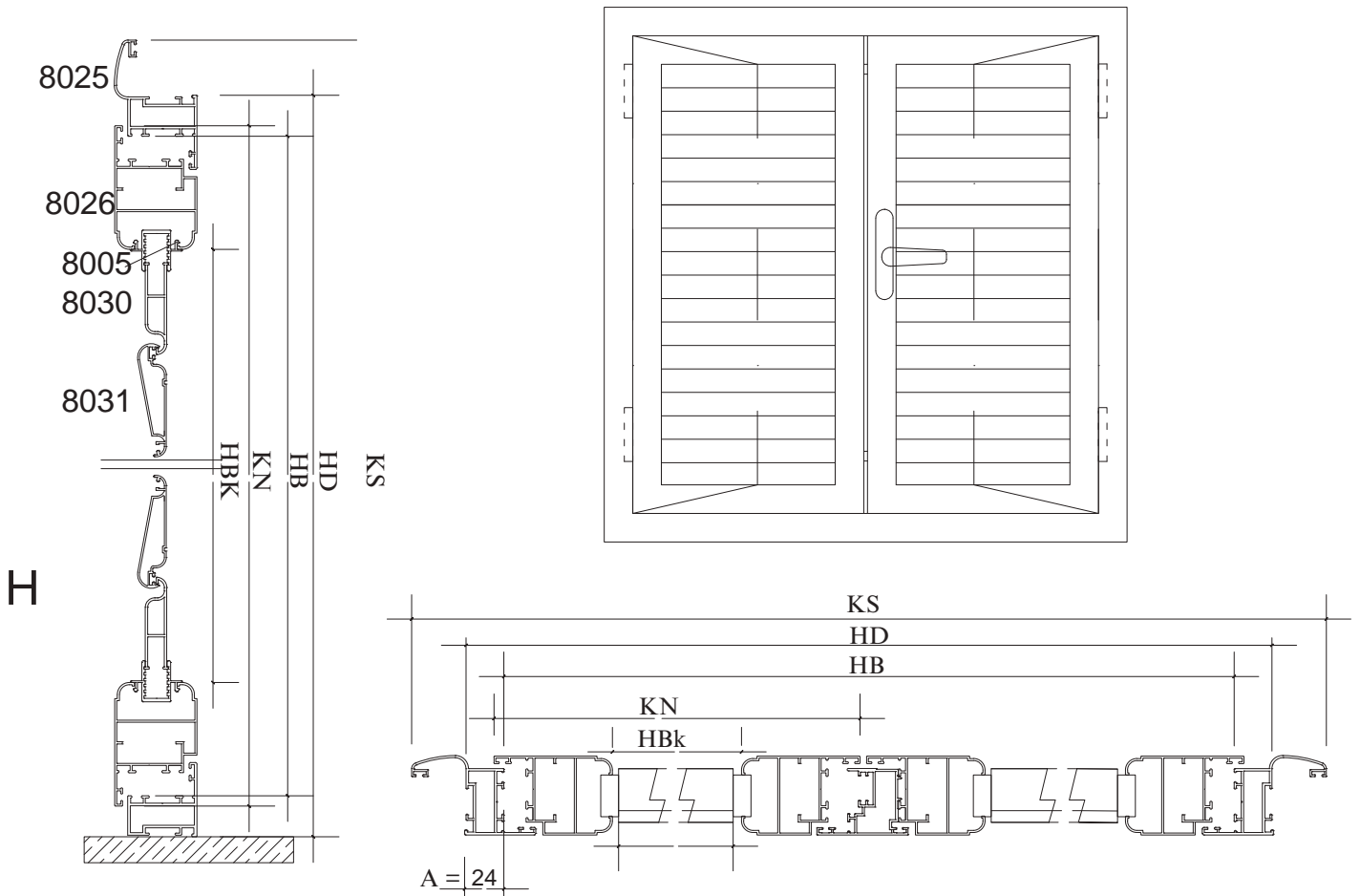




As the name says, these custom-made shutters cover the entire height of your window opening. As a practical and elegant window treatment, full-height shutters help you keep your room cool when it's hot outside and warm when it's cold. They also help provide extra security, privacy and soundproofing. Going with this shutter style is a sure bet



8000 SERIES SHUTTER SYSTEM





INTEGRATED BOX SYSTEM SUITABLE FOR ROLLING SHUTTERS, EXTERNAL BLINDS AND TECHNICAL BLINDS

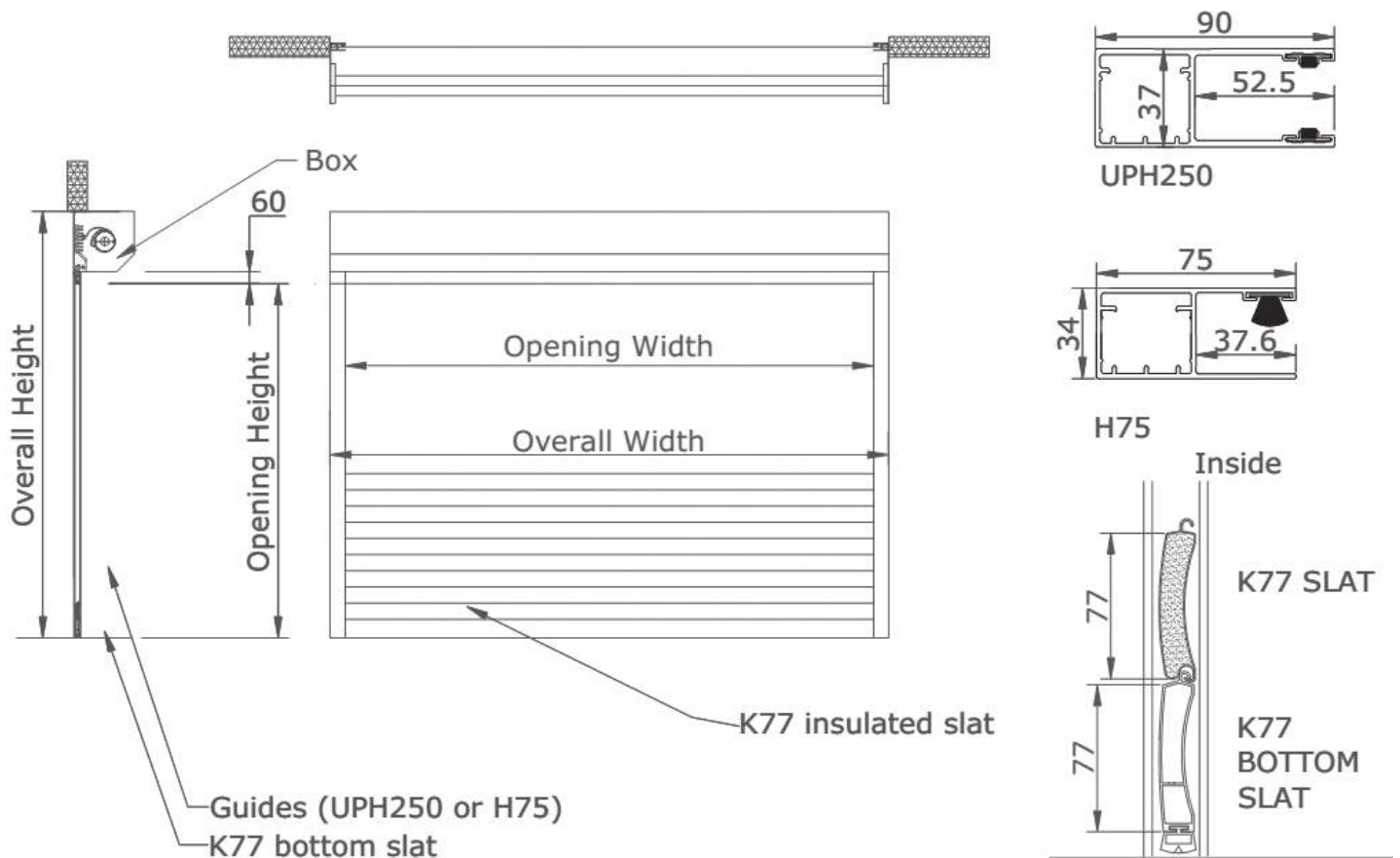


Strong, convenient and useful, Everest roller shutters add protection against harsh climates and unwanted intrusions as well as offering easy access to garages and store rooms. Our Roller Shutters come in a variety of operating systems, specific to fit your needs.

Everest Roller Shutters are available to be installed in several varieties, including: external, internal or totally concealed, and are available for customization so as to fit the look of your building or house while still looking professional and offering that extra layer of security.



8000 SERIES SHUTTER SYSTEM

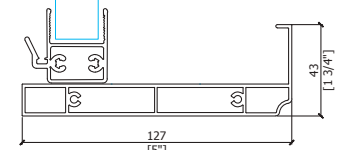
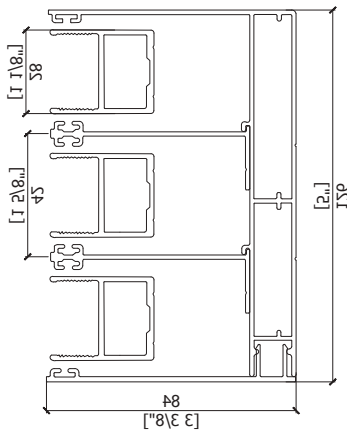
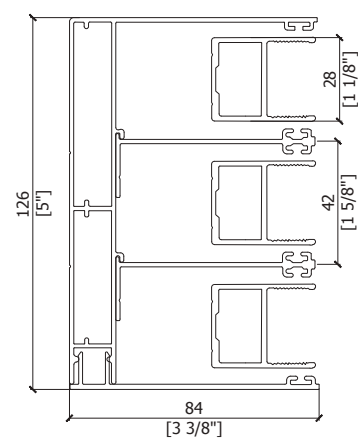
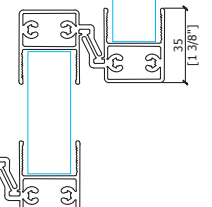
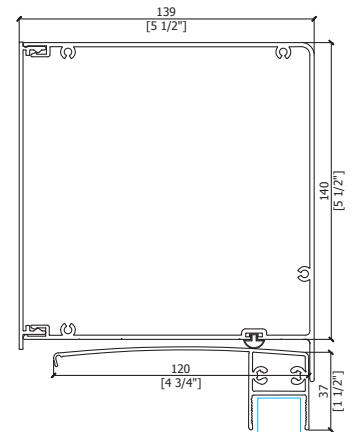
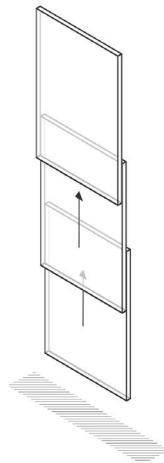
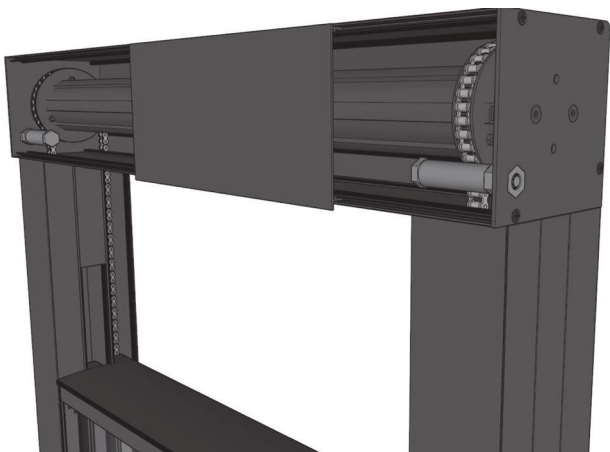




The basic guillotine window comprises two or three vertically sliding frames. Everest offers multiple fixed and mobile configurations, either hidden or visible. The system operates using a high-precision counterweight operation for ultra-simple manageability. Various button locking system options are available, and the system can be motorised.



18 000 GUILLOTINE SYSTEM

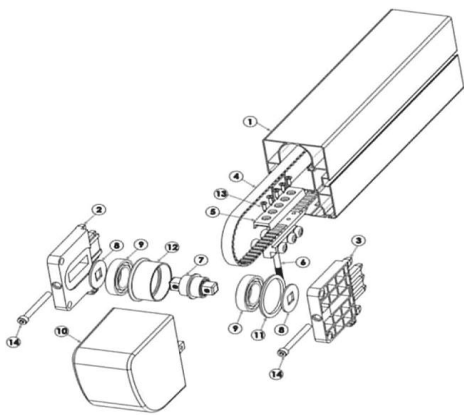




This revolutionary, yet simple, retractable shade system lets you add shade anywhere. Custom overhead canopy kits are available to attach to your pergola, or you can use our complete deck and patio shade structures in aluminum. With built-in wind protection and over forty handsome decorator outdoor fabrics, you can add value, excitement and hours of enjoyment to your home or business. Whether you're seeking shelter from the sun's intense rays, or simply jazzing up the patio area, you'll appreciate the many benefits of Everest Aluminium Pergola.



PERGOLA

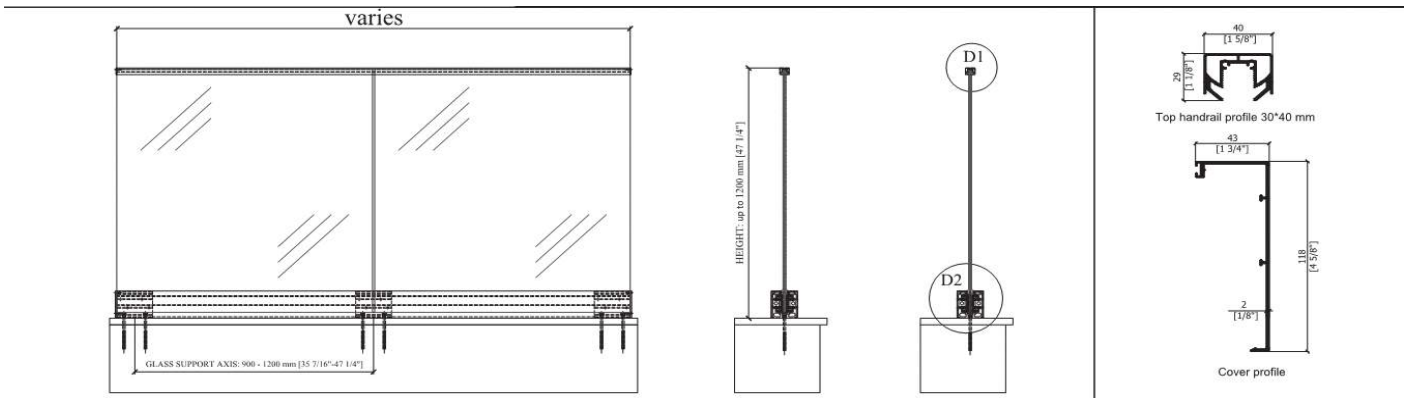




The sleek, modern alternative to traditional guardrail systems. Strong and reliable tempered and laminate glass panels to never block your view. Clean lines and clear views. Glass systems utilize a sleek, simple metal shoe-like channel to mount glass panels along their bottom edge. The baserail features our exclusive tilt lock technology, allowing you to align your glass exactly where you need it. In addition, baserail systems are so sturdy, you don't even need to add a handrail. It's easy to see why baserail glass is the epitome of modern minimalism.



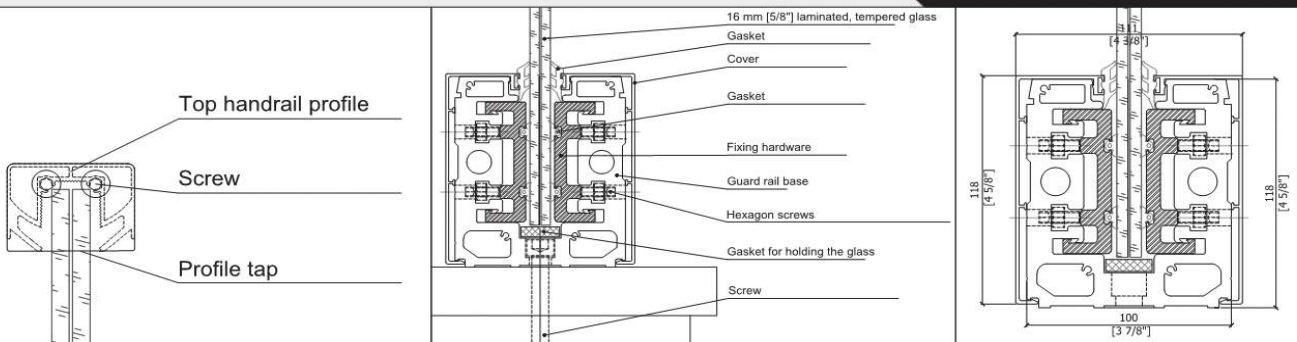
RAILINGS



DETAL 1

DETAL 2

SECTION A - A



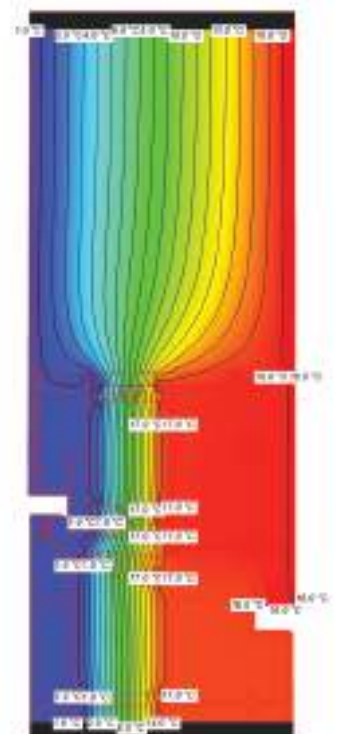
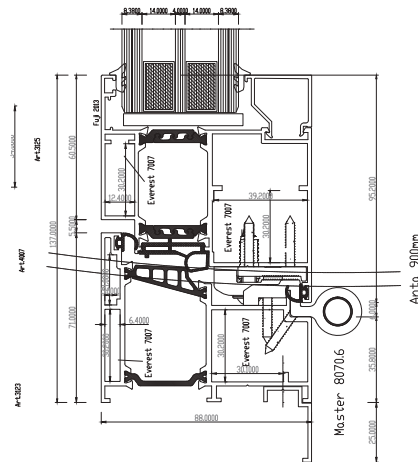
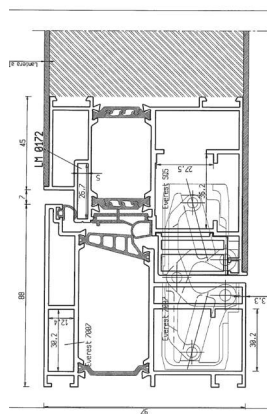
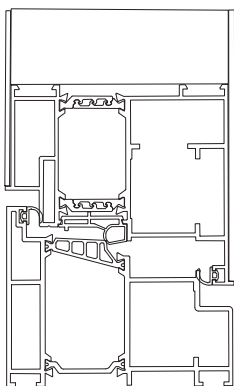


Decide on the variety - with the wood-aluminum door range, nothing remains to be desired. Our models serve every taste. From around over square we thought of everything. Design your own personal style of living through the creative interaction of material and form. The stainless steel applications and the perfectly matched glass design make each model unique.

The immaculately worked grooves reinforce the effect of the light cutouts equipped with different color and shape combinations. Unusual perspectives through sandblasting technology provide sophisticated lighting. Play with fresh and sympathetic variations and create your own natural and cultured living.



ENTRANCE DOOR



Exterior visible width:	77mm [3.03"]
Frame Depth:	97 mm [3.81"]
Sash Depth:	97 mm [3.81"]
Insulated panel Thickness:	≤34 mm [≤1.33"]
Thermal Insulation:	Polyamide 34 mm [1.33"]
Sash mechanism weight limit	≤130 kg [≤286.6 lbs]
Uf :	0.7 W/m ² K [0.123 BTU/h ft ² °F]

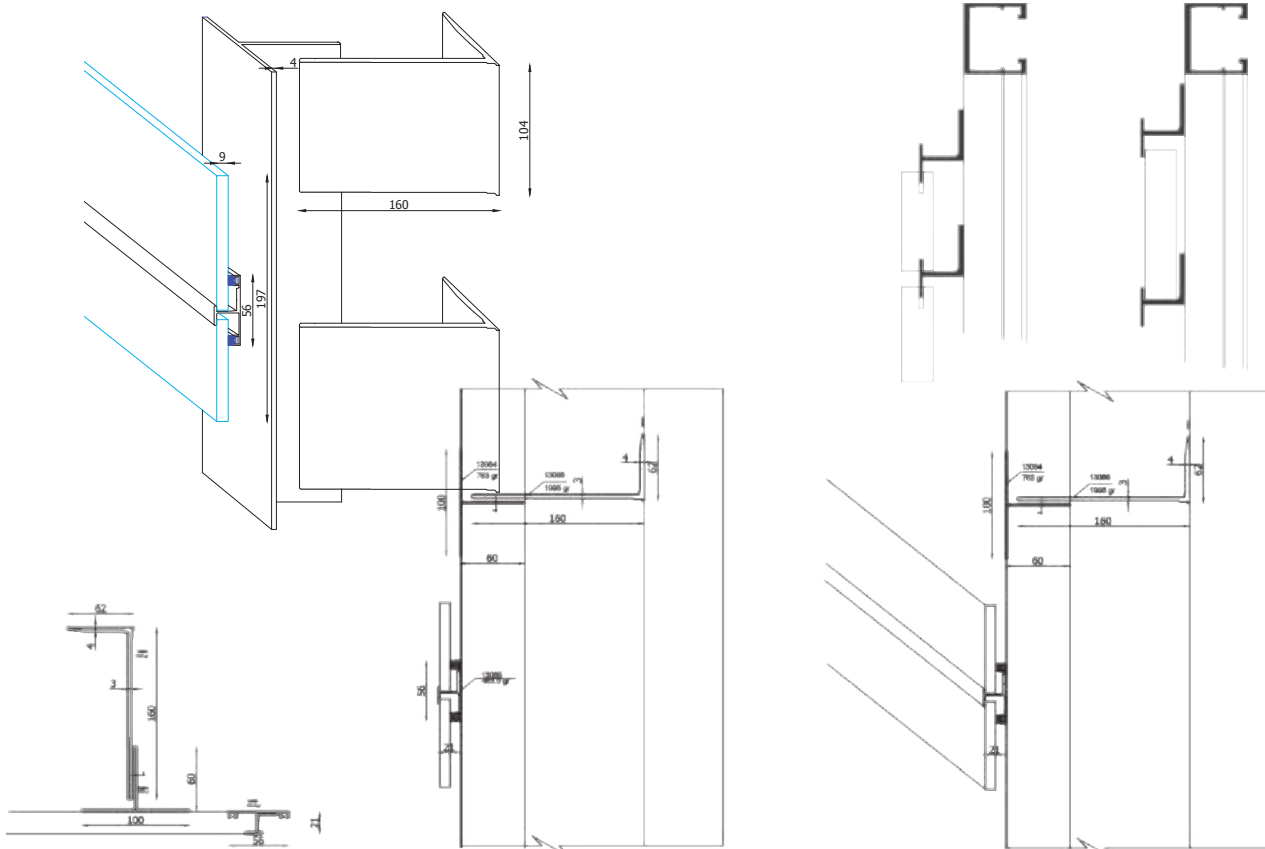


Encasing the facade of a building with a ventilated wall system is the most effective outdoor covering technology that solves the problem of providing protection against humidity and weather conditions, insulating it and improving noise levels inside.

From the basic design the final plans, from the actual production of the parts to the installation and assistance on site, Everest is able to supply ventilated walls or to offer its customers the expertise of its technical staff and its experience for the benefit of their projects and resources to resolve any issues concerning the appearance, features and technical specifications. Unlike other standard solutions (layers of insulation fitted on the internal face of the building or inside cavity walls), this system guarantees excellent results in terms of temperature and humidity with no need to interfere with the internal layout of the building or alter its interior finishes.



CERAMIC TILE CLADDING VENTILATED FAÇADE



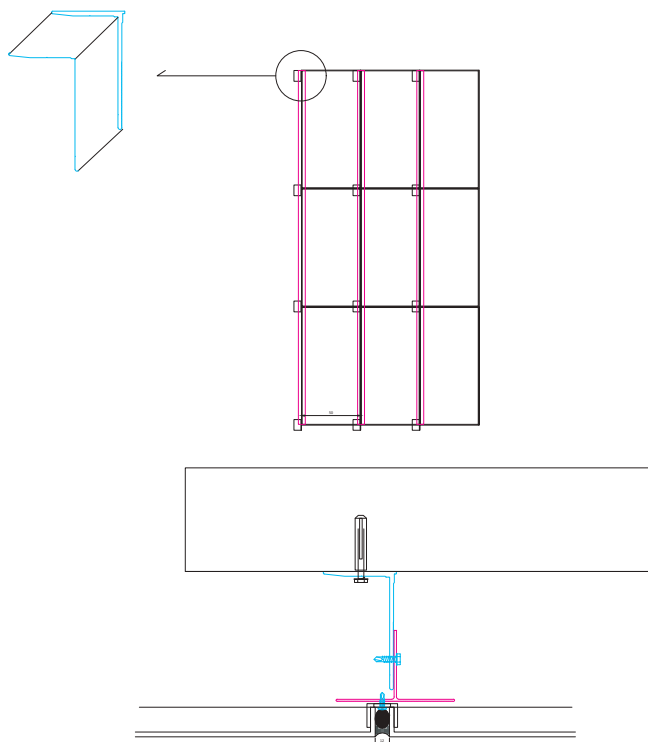


74

The “skin of architecture” is a core topic of modern construction. Building envelopes therefore deserve particular attention. They can be simple and functional, exciting and representative. The proportion, surface structure and colouring of façades lead to the creation of unique structures; their interplay characterizes the Everest aluminium composite material idea. With over 20 years of experience Everest ACM is listening to the needs of architects, fabricators and installers. Lots of projects worldwide serve as an inspirational starting point in the planning process of any construction project. Onwards, we are happy to share our know-how with customers and offer comprehensive advice for every step of the building process.



ALUMINIUM COMPOSITE PANEL (ACP) CLADDING

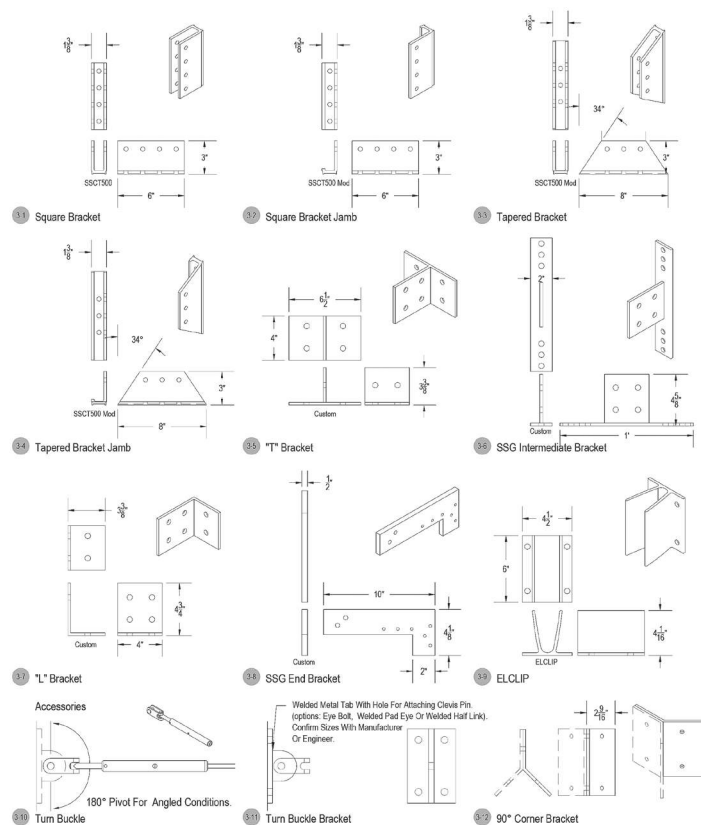
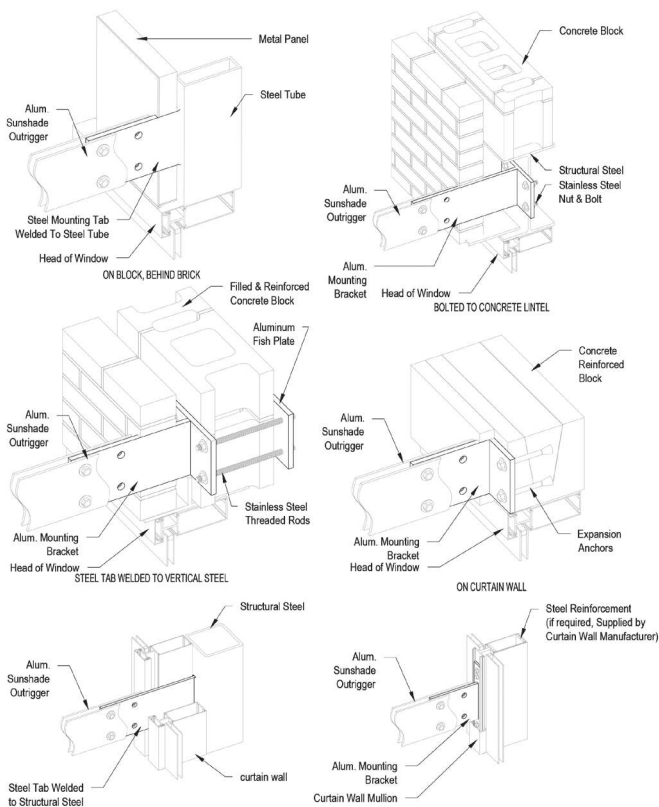




Everest sloped louvered fence and screening is perfect for providing excellent defense against sun rays and also ventilation while keeping items out of sight from others. Using the industries' picture frame design, each panel is rigid enough to stand on its own. Maintaining a consistent design throughout the system, Everest sloped louvers can be configured as a series of screens, grills. Everest sloped louver is custom fabricated to each application, allowing end users to select the amount of visibility and air flow by varying louver spacing.



BRISE SOLEIL

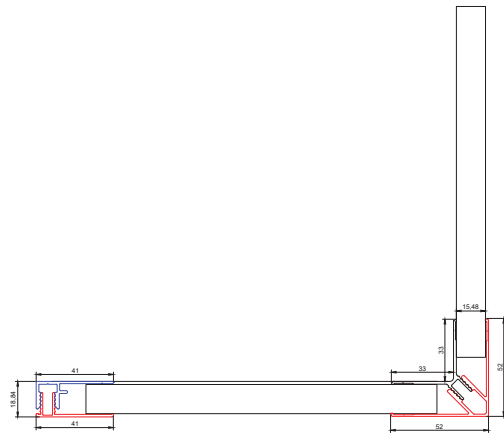
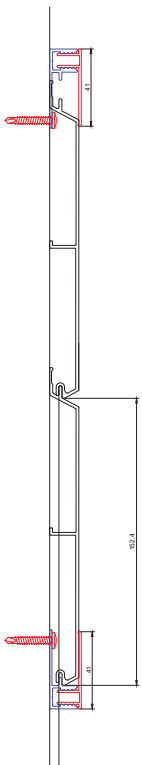




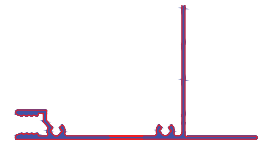
Everest Siding is comprised of extruded aluminum products in a wide range of woodgrain and solid colour finishes. With the durability of metal, look of wood, yet zero maintenance Everest Siding are perfect for any Commercial or high-end residential home. The product is 100% recyclable, non-combustible and is VOC free. We offer solutions for aluminum siding & soffits, linear metal ceilings and a thermally broken L-clip.



ALUMINIUM CLADDING FOR EXTERNAL&INTERNAL USE

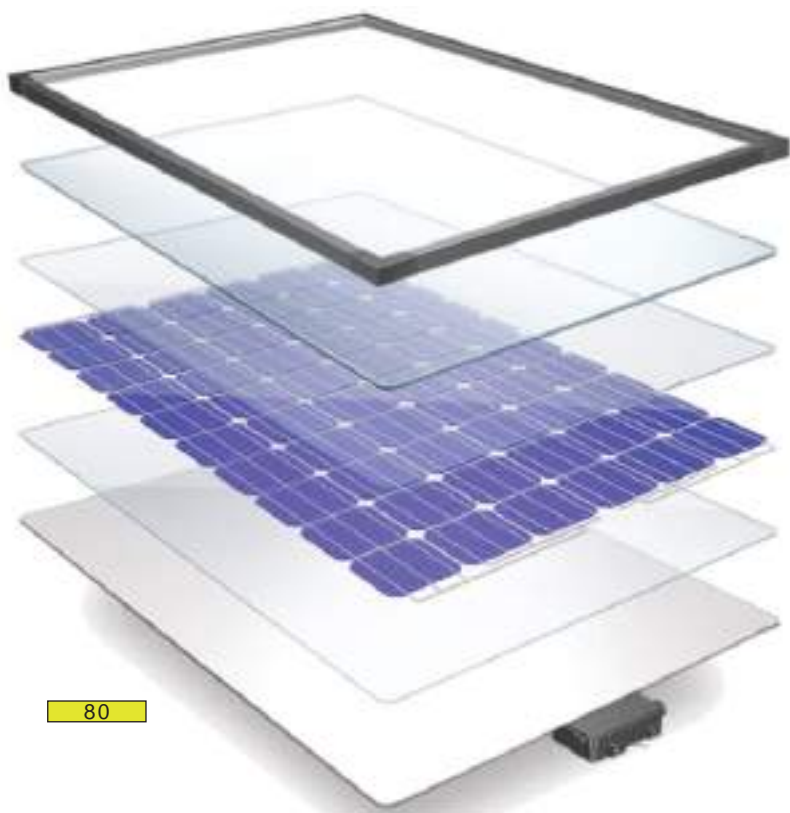


30722
kg/m 0.776



30701
kg/m 0.710

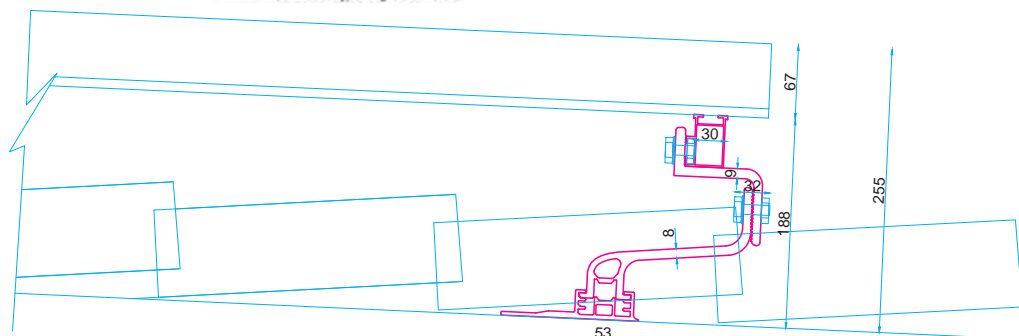
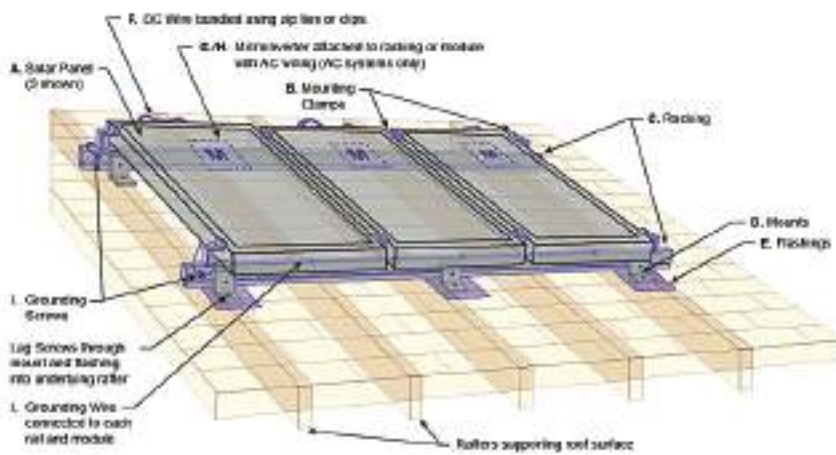




Solar or photovoltaic modules are the heart of every photovoltaic system. The modules contain parallel or series-connected solar cells that generate energy from solar radiation. For private applications and small businesses, the solar modules are usually mounted on the roof of the house. The output of the PV system created by interconnecting the modules depends on many factors such as the number of modules, module type and output, roof pitch or solar radiation.



SOLAR PANEL





NATIONAL CERTIFIED TESTING LABORATORIES

ACTA KISA 0410
ACTA KISA 0411
ACTA KISA 0409
ACTA KISA 0408
ACTA KISA 0407

STRUCTURAL PERFORMANCE TEST REPORT SUMMARY

PROJECT TITLE: "Korea Tower" Seismic Response Analysis

TEST	COMPARISON WITH RESULTS
Ultimate Load Capacity	> 100% (with 10% safety margin)
Yield Point Load Capacity	> 100% (with 10% safety margin)
Steel Moment Resistance	> 100% (with 10% safety margin)
Steel Shear Capacity	> 100% (with 10% safety margin)
Ultimate Load Capacity	> 100% (with 10% safety margin)

Test Completion Date: 08/07/15

Reported by: [Signature]

NATIONAL CERTIFIED TESTING LABORATORIES

ACTA KISA 0410
ACTA KISA 0411
ACTA KISA 0409
ACTA KISA 0408
ACTA KISA 0407

STRUCTURAL PERFORMANCE TEST REPORT SUMMARY

PROJECT TITLE: "Korea Tower" Seismic Response Analysis

TEST	COMPARISON WITH RESULTS
Ultimate Load Capacity	> 100% (with 10% safety margin)
Yield Point Load Capacity	> 100% (with 10% safety margin)
Steel Moment Resistance	> 100% (with 10% safety margin)
Steel Shear Capacity	> 100% (with 10% safety margin)
Ultimate Load Capacity	> 100% (with 10% safety margin)

Test Completion Date: 08/07/15

Reported by: [Signature]

RS

ACTA KISA 0410
ACTA KISA 0411
ACTA KISA 0409
ACTA KISA 0408
ACTA KISA 0407

STRUCTURAL PERFORMANCE TEST REPORT SUMMARY

PROJECT TITLE: "Korea Tower" Seismic Response Analysis

TEST	COMPARISON WITH RESULTS
Ultimate Load Capacity	> 100% (with 10% safety margin)
Yield Point Load Capacity	> 100% (with 10% safety margin)
Steel Moment Resistance	> 100% (with 10% safety margin)
Steel Shear Capacity	> 100% (with 10% safety margin)
Ultimate Load Capacity	> 100% (with 10% safety margin)

Test Completion Date: 08/07/15

Reported by: [Signature]

NATIONAL CERTIFIED TESTING LABORATORIES

ACTA KISA 0410
ACTA KISA 0411
ACTA KISA 0409
ACTA KISA 0408
ACTA KISA 0407

STRUCTURAL PERFORMANCE TEST REPORT SUMMARY

PROJECT TITLE: "Korea Tower" Seismic Response Analysis

TEST	COMPARISON WITH RESULTS
Ultimate Load Capacity	> 100% (with 10% safety margin)
Yield Point Load Capacity	> 100% (with 10% safety margin)
Steel Moment Resistance	> 100% (with 10% safety margin)
Steel Shear Capacity	> 100% (with 10% safety margin)
Ultimate Load Capacity	> 100% (with 10% safety margin)

Test Completion Date: 08/07/15

Reported by: [Signature]

RS

ACTA KISA 0410
ACTA KISA 0411
ACTA KISA 0409
ACTA KISA 0408
ACTA KISA 0407

STRUCTURAL PERFORMANCE TEST REPORT SUMMARY

PROJECT TITLE: "Korea Tower" Seismic Response Analysis

TEST	COMPARISON WITH RESULTS
Ultimate Load Capacity	> 100% (with 10% safety margin)
Yield Point Load Capacity	> 100% (with 10% safety margin)
Steel Moment Resistance	> 100% (with 10% safety margin)
Steel Shear Capacity	> 100% (with 10% safety margin)
Ultimate Load Capacity	> 100% (with 10% safety margin)

Test Completion Date: 08/07/15

Reported by: [Signature]

AQ&ERT

ACTA KISA 0410
ACTA KISA 0411
ACTA KISA 0409
ACTA KISA 0408
ACTA KISA 0407

STRUCTURAL PERFORMANCE TEST REPORT SUMMARY

PROJECT TITLE: "Korea Tower" Seismic Response Analysis

TEST	COMPARISON WITH RESULTS
Ultimate Load Capacity	> 100% (with 10% safety margin)
Yield Point Load Capacity	> 100% (with 10% safety margin)
Steel Moment Resistance	> 100% (with 10% safety margin)
Steel Shear Capacity	> 100% (with 10% safety margin)
Ultimate Load Capacity	> 100% (with 10% safety margin)

Test Completion Date: 08/07/15

Reported by: [Signature]

CCI AWARD 2016

Everest

Excellence in a sustainable and safe air flow solution, designed to maximize the efficiency of the air conditioning system, providing a healthy and comfortable environment for the building's occupants.

www.everestusacorp.com

CERTIFICATE

ISO 9001:2015

EVEREST

Quality Management System

www.everestusacorp.com

AGENCIJA ZA VEŠTAČENJE I PROJEKTOVANJE

LICENSA

NE 3847/15

EVEREST

AGENCIJA ZA VEŠTAČENJE I PROJEKTOVANJE

www.everestusacorp.com

Improving your comfort
WITH SMART SOLUTIONS



www.everestusacorp.com

Improving your comfort WITH SMART SOLUTIONS



EVEREST USA CORP.

Address: 29-07 Ditmars Blvd
Astoria, NY 11105
United States
Tel: +1 (929) 463-3475
Email: contact@everestusacorp.com
Web: www.everestusacorp.com



ALUMINUM PRODUCTION FACTORY

Address: Bulevardi Blu, Nr.544,
Kamez, Tirana, Albania
Tel: +355 47 20 44 44
Fax: +355 48 20 17 17
e-mail: info@everest.al



EVEREST KOSOVO

Address: Industrial
Area, Pristina, Kosovo
Tel: +377 44 50 94 94
Tel: +355 47 20 44 44
e-mail: info@everest.al
e-mail: kosove@everest.al



THE REPUBLIC OF NORTH MACEDONIA

Address: Skopje ul. Jadranska
Magistrala BB-Vizbegovo
Tel: +389 72 78 48 58
Tel: +355 47 20 44 44
e-mail: info@everest.al
e-mail: makedonia@everest.al



EVEREST MONTENEGRO

Address: Golubovci,
Podgorica, Montenegro
Tel: +382 68 02 02 22
Tel: +355 47 20 44 44
e-mail: info@everest.al
e-mail: montenegro@everest.al



EVEREST MALTA

Address: Triq in-negozju
Mrihel Birkirkara Bkr 3000
Tel: +356 21 44 94 00
Mob: +356 79 44 94 00
e-mail: info@everest.al
e-mail: malta@everest.al

